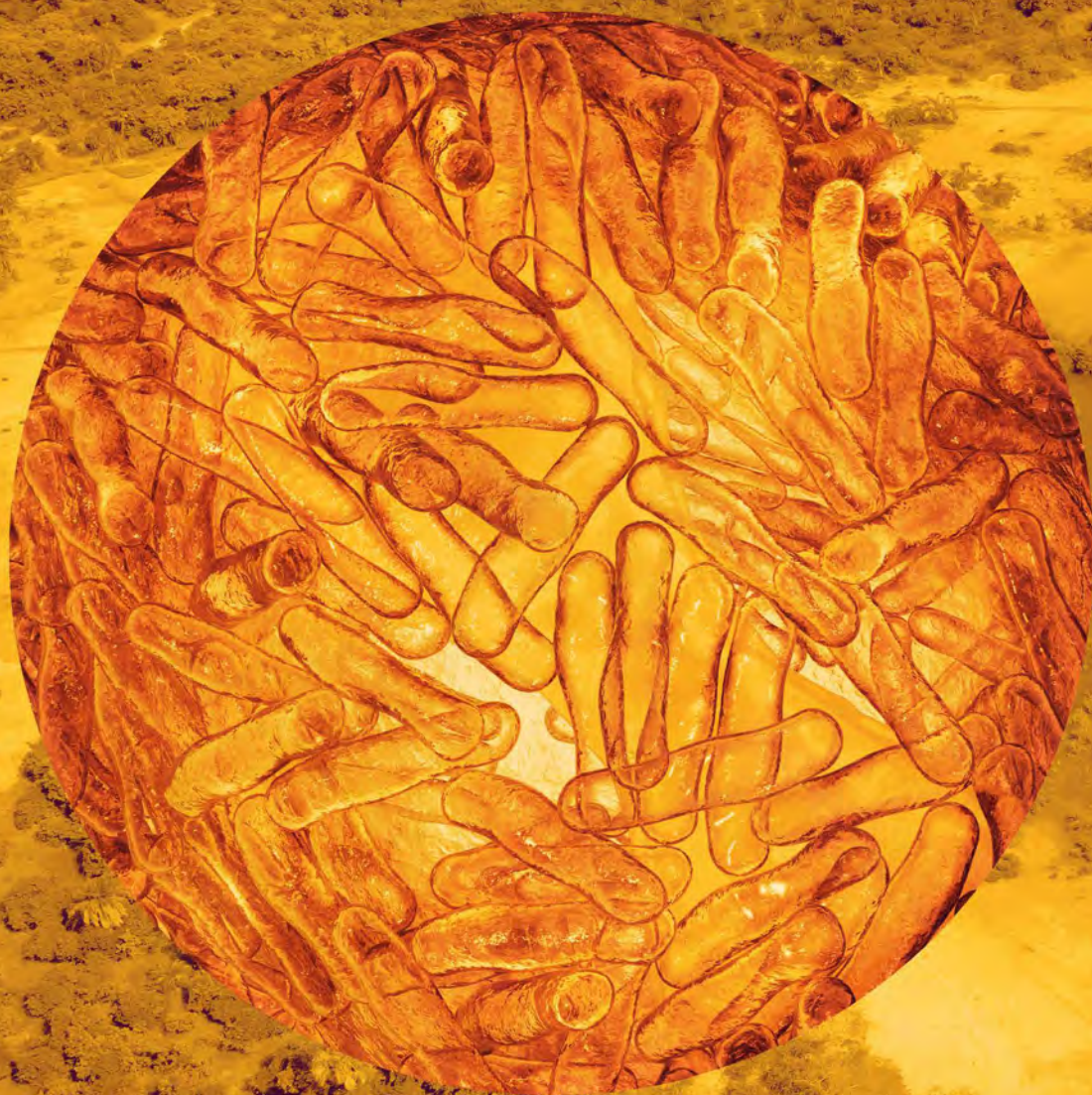


Postgraduate programmes in

Health

2023-24



**UNIVERSITY
OF LONDON**

LONDON
SCHOOL of
HYGIENE
& TROPICAL
MEDICINE



Contents

Welcome	03
Why Choose LSHTM?	04
Why Distance Learning?	05
LSHTM and University of London	06
Our Global Student Community	08
The Distance Learning Experience	10
Clinical Trials	12
Epidemiology	14
Global Health Policy	16
Health in Humanitarian Crisis	18
Infectious Diseases	20
Public Health	22
Short Courses	25
How to Apply	26
Fees	27

Cover images: Monkeypox virus, 3D illustration (credit: Dr_Microbe, iStock) and Aerial view of national reserve in south of Gambia, West Africa. (Credit: mariusz_prusaczyk, iStock.)

Monkeypox is a viral infection caused by an orthopox DNA virus, most closely related to smallpox. It occurs naturally in central and west Africa. In our increasingly complex and interconnected world, the exact nature of the next outbreak is uncertain and unpredictable. Health surveillance and detection systems need to be strengthened around the world, as infectious disease can easily spread from one country to another. LSHTM brings together global expertise, knowledge, research and teaching to help humanity adapt faster to outbreaks of disease. Read more about LSHTM's research at lshtm.ac.uk/research.



Foreword from the Director

"Our mission is to improve health and health equity in the UK and worldwide; working in partnership to achieve excellence in public and global health research, education and translation of knowledge into policy."



Professor Liam Smeeth
LSHTM Director

The world is facing many challenges. Climate change, pandemics, urbanisation, major demographic shifts, migration, increased poverty, and the continuing threat of endemic infectious diseases are shifting priorities in human health and new threats are emerging.

As a world leading institution that produces innovative research, translates that research into improved health, and educates the next generation, the London School of Hygiene & Tropical Medicine (LSHTM) has a hugely valuable role to play in this fast-changing world. Our community of staff, students and alumni are working together to make a shared and vital contribution to addressing major health inequalities and challenges. I am proud to be Director of a university where everyone is engaged in our central mission to improve health worldwide through high quality research and education.

LSHTM has a strong track record of anticipating future education priorities and of innovative, exciting research that makes a positive impact on people's lives. Key to continued success in all arenas is creating a truly inclusive environment for all our staff and students to thrive and to maximise their potential.

I want our community to work together with mutual trust and respect, truly valuing diversity and promoting equal opportunities - not just internally, but in our partnerships as well. Work will continue to ensure that our collaborations around the world are based on equality rather than old colonial models. The integration of our two Medical Research Council (MRC) Units in Uganda and the Gambia offers tremendous opportunities to build on their successes to date, working in partnership to further develop both Units as thriving centres of excellence.

Our vision is for a more healthy, sustainable and equitable world for everyone. Our values – to act with integrity, embrace difference, work together and create impact – underpin our mission, provide purpose and direction, and express our expectations of behaviour for everyone at LSHTM.

This is a unique community dedicated to improving health worldwide. I am delighted to welcome you.

Why Choose LSHTM?



Over 120 years of health innovation

LSHTM has been at the forefront of critical responses in global health for over 120 years. From making the first link between smoking and lung cancer, to conducting pioneering work on Ebola vaccines and COVID-19. LSHTM's expertise ranges from the molecular to the global, the theoretical to the applied, the analytical to the political.



Students from 150 countries

Our students truly reflect the global nature of LSHTM. The diversity of backgrounds, interests and experience they bring from all over the world creates an enriched learning experience.



£180M+ research income

LSHTM's annual research income is provided by national and international sources including the UK government and research councils, Wellcome Trust, Gates Foundation and other philanthropic organisations.



32,000 alumni

Our alumni go on to distinguished careers. Most maintain a lifelong link to LSHTM and are actively involved with our strong alumni network based in more than 190 countries.



Committed to NetZero by 2030

Sustainability is at the centre of LSHTM's values, and we have set the ambitious target of reaching net zero carbon emissions by 2030. To achieve this we are continuously reducing our carbon emissions and improving our overall environmental performance.

#1

in the world for publishing open access research
CWTS Leiden Ranking 2022

#1

for key measure of impact
Times Higher Education REF 2021

#3

in the world for public health
ShanghaiRanking's Global Ranking of Academic Subjects 2022

#4

in the world in infectious diseases
US News Best Global Universities Ranking 2022

Awarded Queen's Anniversary Prize for world-leading work on COVID-19 and pandemic preparedness



Why Distance Learning?

Distance learning is an ideal option if you do not wish or are unable to study in London for an extended period of time. Our programmes mean you can study with LSHTM from anywhere in the world, over several years if needed, at times that fit in with your other commitments.

Flexibility

Our distance learning programmes allow you to study independently and to fit in with your other commitments, subject to some deadlines. You have up to five years to complete your programme. You receive comprehensive materials to guide you through a course of directed self-study, as well as support from our academic team at LSHTM and the ability to connect with fellow students around the world.

Choose what you study

If you'd prefer to study in one or two specialised areas, you can boost your knowledge with our individual modules. These can be put towards a full programme at a later date if you wish.

Study anywhere in the world

Whether you are a medical professional in the field or a policy worker for a non-governmental organisation, you can enhance your experience with a prestigious qualification no matter where you are based.

Blended learning

After completing a minimum number of core modules, you may choose to study up to two elective modules from our intensive master's degrees in place of distance learning modules.

Career progression

While some people put their careers on hold to study, our programmes enable you to continue building your career momentum while gaining the knowledge and skills for future opportunities. This also means that you can immediately apply concepts you have learned to real-life situations, making the experience of studying more rewarding.

Quality of learning

& resources

Our distance learning programmes are developed by academic staff at LSHTM, to the same standard and quality as on-campus programmes. You will benefit from comprehensive online resources and study materials, written specifically for the programmes by subject experts.

Pay as you go

Because of the flexible nature of distance learning, you can pay for what you plan to study each year at the point of registration rather than paying the whole fee up-front. This allows you to spread the cost over the lifetime of your programme.

LSHTM and University of London

Our distance learning programmes are run in collaboration with the University of London, a federation of 17 independent member institutions and universities, of which LSHTM is one.

Who does what?

The course content, teaching and assessment are developed by academic staff at LSHTM, while the University of London manages administrative matters including registration, distribution of materials and tuition fee payment. As such, applications must be made through the University of London.

Quality of teaching

LSHTM's distance learning programmes aim to provide health practitioners, clinicians, policy-makers, scientists and recent graduates with a world-class qualification in public and global health.

These programmes are developed to the same high standard as our on campus programmes, and as a result, the final certification you will receive as a distance learning graduate is the same as an on campus student.

Your qualification

When you graduate, your prestigious University of London award will be valued globally and help you to pursue sought-after careers in health-related fields. On graduation, you will join a distinguished list of University of London alumni from Nobel prize-winners to leaders in national and regional governments.

When you graduate with a degree, diploma or certificate you will receive two important documents – your Final Diploma (the parchment you receive on graduation) and a Diploma Supplement.

The final diploma

- Indicates that you were registered with the University of London and awarded a University of London qualification, without stating the method of study
- States that the London School of Hygiene & Tropical Medicine developed the syllabus and provided assessment
- Features the University of London crest and the Vice-Chancellor's signature, and the Director of the London School of Hygiene & Tropical Medicine's signature

The diploma supplement

- Describes the nature, level and content of the programme you successfully completed
- Includes the transcript of modules taken, marks achieved and overall classification
- States the role of the London School of Hygiene & Tropical Medicine and the method of study

"I chose to study Public Health by distance learning as I was able to balance my studies around working full time and was able to follow the courses and attend lectures from anywhere in the world. I was also able to select modules that were specifically linked to my career in humanitarianism, as well as broadening my expertise in new areas."

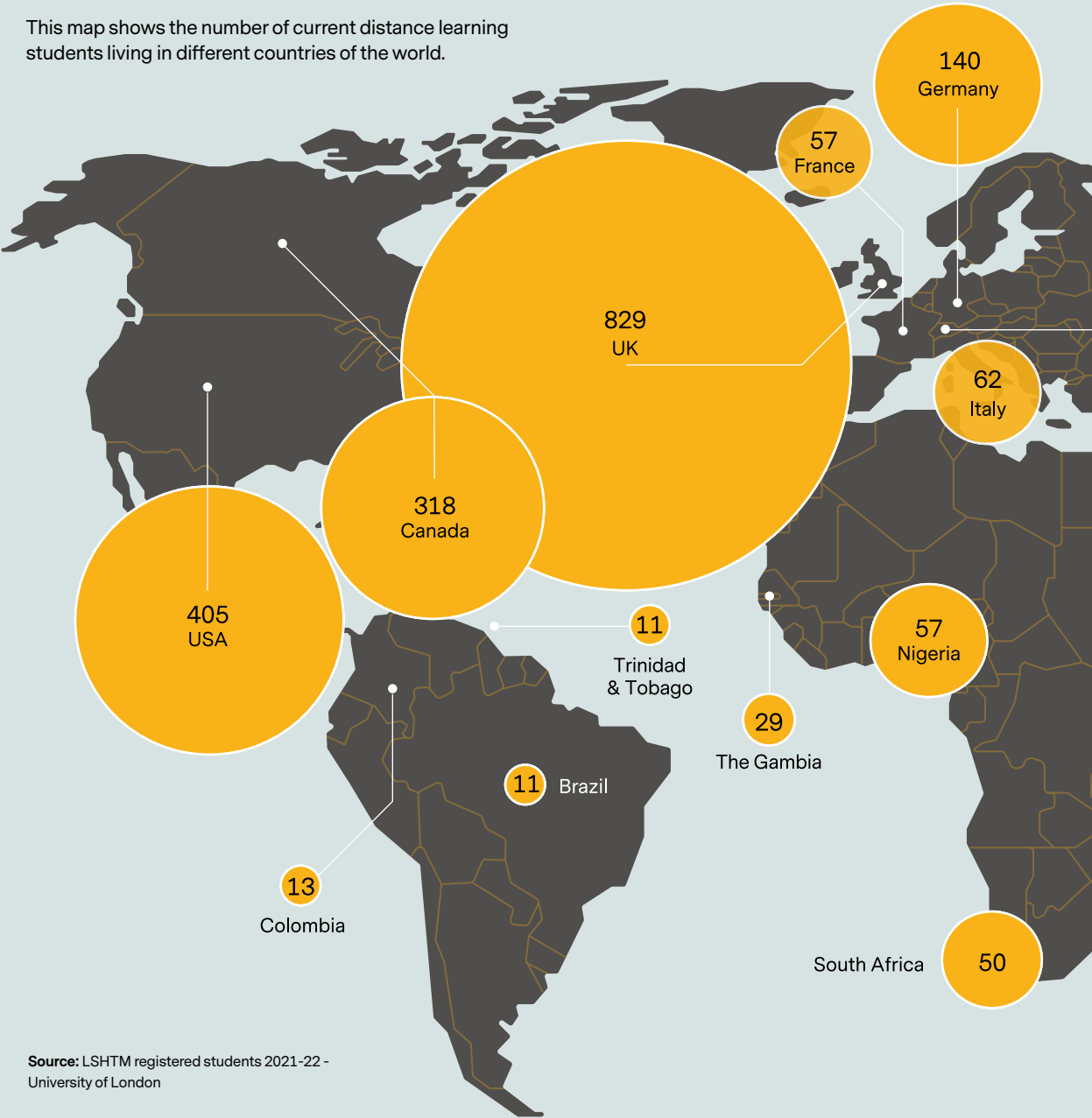
"I was able to select modules that were specifically linked to my career in humanitarianism."

David Burt • UK
Public Health



Our Global Student Community

This map shows the number of current distance learning students living in different countries of the world.



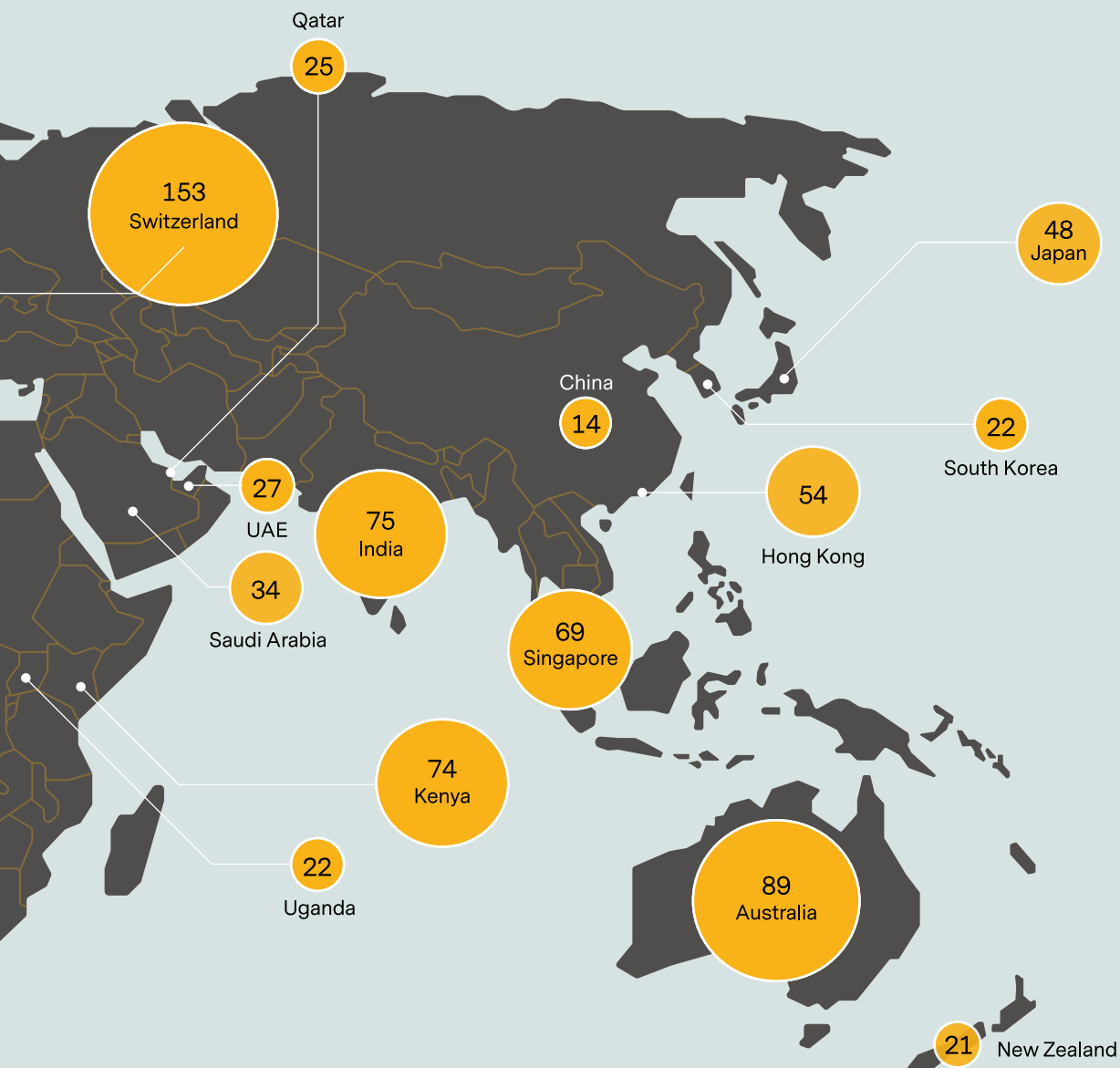
Source: LSHTM registered students 2021-22 - University of London

United Kingdom	829	Italy	62	Saudi Arabia	34	Egypt	20	Brazil	11
USA	405	France	57	The Gambia	29	Zambia	19	Nepal	11
Canada	318	Nigeria	57	Malawi	29	Denmark	18	Syria	11
Switzerland	153	Hong Kong	54	UAE	27	Zimbabwe	17	Trinidad & Tobago	11
Germany	140	South Africa	50	Qatar	25	Lebanon	15	Botswana	10
Australia	89	Japan	48	South Korea	22	China	14	Norway	10
India	75	Netherlands	42	Uganda	22	Malaysia	14	Portugal	10
Kenya	74	Spain	40	New Zealand	21	Sweden	14	Sudan	10
Singapore	69	Belgium	37	Pakistan	21	Colombia	13	Tanzania	10
Republic of Ireland	67	Austria	34	Philippines	21	Turkey	13	Vietnam	10



Did you know?

LSHTM has over 3,500 distance learning students from 150 countries.



DR Congo	9	Taiwan	8	Luxembourg	6	Thailand	4	Paraguay	3
Ethiopia	9	Argentina	7	Somalia	6	Bahrain	3	Peru	3
Ghana	9	Bermuda	7	Sri Lanka	6	Chile	3	Russia	3
Greece	9	Jordan	7	Cambodia	5	Iraq	3	Slovenia	3
Mexico	9	Malta	7	South Sudan	5	Jamaica	3	St Kitts and Nevis	3
Ukraine	9	Mozambique	7	Barbados	4	Latvia	3	Tunisia	3
Yemen	9	Rwanda	7	Brunei	4	Moldova	3	Uruguay	3
Finland	8	Sierra Leone	7	Kuwait	4	Morocco	3	Djibouti	2
Indonesia	8	Cameroon	6	Panama	4	Namibia	3	Israel	2
Myanmar	8	Croatia	6	Eswatini	4	New Caledonia	3	Papua New Guinea	2

The Distance Learning Experience

How you study

Our distance learning programmes are predominantly online and largely self-directed study to enable students to study independently and at times convenient to them to fit in with other commitments. Some modules may have occasional complementary live online sessions, however you have access to tutorial support and the ability to interact with other students and form study groups throughout the study year via the discussions in our virtual learning environment, Moodle.

The study year

The study year runs from the beginning of October through to the June examinations. Some students also study between June and September with extended tutorial support (e.g. those undertaking projects, the Clinical Trials integrating report, or two of the Epidemiology modules). Deadlines for submission of coursework vary per programme but are usually in February, March, May and September.

Time commitment

To complete in the minimum period (one year for the postgraduate certificate, and two years for the postgraduate diploma or master's) you should be prepared to study for 15–25 hours per week throughout the study year. Most students take between three and five years to complete their master's.



Study materials

You receive access to LSHTM's virtual learning environment, Moodle, from the beginning of October. Most of your study materials and resources are provided here. For some modules you may receive additional computer software such as Stata. These resources guide your self-study and indicate how and where you can obtain further materials and support to enhance your studies.

Module information

Module specification documents provide full details of the content, learning objectives, study materials and method of assessment of each module, plus any specific requirements. These are located in the 'Structure' tab of the relevant programme page:
lshtm.ac.uk/study/distance-learning



Support and feedback

Module tutors answer your queries and promote discussion, as well as providing written feedback and advice on formative and assessed work. If you undertake a project, you are assigned a personal supervisor who will offer support. We encourage you to engage in academic discussions with tutors and fellow students through the online discussion forums, some of which may be held live. You also receive access to past examination papers, examiners' reports and previous years' project reports.

Assessment

This varies per module, but typically includes a combination of unseen written examination papers and written assignments. Examinations take place once a year in June.



Credit framework

LSHTM awards credits for successfully completed modules and projects/integrating reports. These are consistent with the English international entry requirement and European Credit System (ECTS), so other educational institutions and employers will easily understand and recognise the amount and standard of study involved in the programmes. To obtain a qualification, the following credits must be gained:

- PG Certificate - 60 UK (30 ECTS) credits
- PG Diploma - 120 UK (60 ECTS) credits
- MSc - 180 UK (90 ECTS) credits

Blended learning

Once you have completed a minimum number of compulsory core modules, you may be able to substitute up to two elective modules from our intensive programmes in place of distance learning modules. Where available, modules run for 2.5 days per week over a five-week period. If you select this option, you must pay module additional fees and you may be required to arrange your own travel and accommodation.

English language

All applicants must have an advanced ability to study in English. Applicants may be required to pass (or to have passed within the last three years) a suitable test of proficiency in English considered acceptable to the University. Full English language requirements can be found on the relevant programme webpage: lshtm.ac.uk/study/distance-learning

Computer requirements

You will need a computer and regular access to the internet to view your learning materials (including online library resources), participate in discussion forums and submit assignments. You will need basic software, such as a PDF reader, and the ability to store electronic documents.

Clinical Trials

(PG Certificate, PG Diploma and MSc)

The need for rigorous evaluation of healthcare is increasingly recognised worldwide. An important type of evaluation is the randomised controlled clinical trial. This programme provides an understanding of trials which will equip you to work in this increasingly important field.

You will develop knowledge and understanding of the key decisions surrounding the design, conduct, analysis and reporting of clinical trials. You will be trained to develop skills to scrutinise information, analyse critically, carry out research and communicate effectively.

Who is it for?

This directed self-study and tutor-supported programme is for experienced professionals in low-, middle- and high-income countries who wish to consolidate or broaden their role in clinical trials. It will also benefit anyone wishing to understand more about trials before moving into this field.

Structure

- PG Certificate: 4 compulsory core modules
- PG Diploma: 8 modules (4 compulsory core + 4 elective modules)
- MSc: 11 modules (4 compulsory core + 5 elective + 2 compulsory modules)

Study materials

The Clinical Trials modules are delivered solely online. The study materials comprise interactive sessions supported by discussion forums, readings and additional resources provided via our virtual learning environment Moodle. Statistical software (Stata) is supplied.

Entry requirements

All applicants are required to have:

- Either a first or second class honours degree, or the equivalent, from a university or other institution acceptable to the University of London, in a subject appropriate to the programme;
- Or an appropriate professional or technical qualification, together with at least three years' relevant experience, which satisfies the University as a qualification equivalent to a second class honours degree. All applications in this category will be considered on an individual basis.

Key information:



Programme directors:

Professor Diana Elbourne
Dr Susana Scott
Dr Claire Snowdon



Academic queries:

ctsupport@lshtm.ac.uk

General enquiries:

london.ac.uk/contact-us



Fees for 2023/24

PG Certificate:	£9,820
PG Diploma:	£13,300
Master's:	£16,800



lshtm.ac.uk/study/courses/clinical-trials-online

For the most up-to-date programme information and entry requirements visit the programme webpage.



Li Zhao · China/UK

"LSHTM is a world-leading academic institution in clinical trials and has attracted students from all over the world. In particular, the programme provides a variety of different modules that cover all the necessary aspects of clinical trials, empowering the students to take on any roles in the field."

Modules

Compulsory core modules (PG Certificate, PG Diploma and MSc)

- CTM101 Fundamentals of Clinical Trials
- CTM102 Basic Statistics for Clinical Trials
- CTM103 Clinical Trials in Practice
- CTM104 Reporting and Reviewing Clinical Trials

Elective modules (PG Diploma and MSc)

Clinical Trials elective modules (CTM2):

- CTM201 Protocol Development (compulsory for the MSc, elective for the PG Diploma)
- CTM202 Trial Designs
- CTM203 Project Management and Research Co-ordination
- CTM204 Regulatory affairs, Good Clinical Practice and Ethics
- CTM205 Data Management
- CTM206 Data Monitoring and Interim Analyses
- CTM208 Further Statistical Methods in Clinical Trials
- CTM209 Cluster Randomised Trials
- CTM210 Integrating Module (compulsory for the MSc)

Recommended modules selection group:

- EPM101 Fundamentals in Epidemiology
- EPM301 Epidemiology of Infectious Diseases
- EPM302 Modelling and the Dynamics of Infectious Diseases
- EPM304 Advanced Statistical Methods in Epidemiology

- EPM307 Global Epidemiology of Non-Communicable Diseases
- GHM201 Health Systems
- IDM201 Bacterial Infections
- IDM202 Nutrition and Infection
- IDM203 Parasitology
- IDM204 Viral Infections
- IDM205 Healthcare-Associated Infection
- IDM213 Immunology of Infection and Vaccines
- IDM215 Water, Sanitation and Hygiene
- IDM301 Epidemiology and Control of Infectious Diseases
- IDM501 HIV
- IDM502 Tuberculosis
- IDM503 Malaria
- PHM201 Health Decision Science
- PHM203 Economic Analysis for Health Policy
- PHM204 Economic Evaluation
- PHM205 Environmental Epidemiology
- PHM206 Environmental Health Policy
- PHM207 Health Care Evaluation
- PHM209 Globalisation and Health
- PHM210 Managing Health Services
- PHM211 Medical Anthropology in Public Health
- PHM212 Organisational Management
- PHM213 Principles & Practice of Health Promotion
- PHM214 Conflict and Health
- PHM215 History and Health
- PHM216 Sexual Health
- PHM218 Applied Communicable Disease Control
- PHM219 Evaluation of Public Health Interventions

Module specifications:

To view the module specifications, please visit lshtm.ac.uk/study/modules-dl

Note that restrictions and prerequisites may apply to some of the modules.

Epidemiology

(PG Certificate, PG Diploma and MSc)

Epidemiology is the key discipline underlying medical research, public health practice and healthcare evaluation. Its methods are used to describe the nature of health problems, investigate the causes of diseases, and evaluate the impact of interventions for treating and preventing ill health.

This programme provides you with a comprehensive understanding of core concepts and methods in epidemiology and statistics. The PG Diploma and MSc further aim to provide advanced skills in specific applications of epidemiological research methods.

Who is it for?

This directed self-study programme will suit anyone seeking a career in medical research or academic medicine, as well as professionals in public health or community medicine. It may also be of interest to those who require an understanding of epidemiology, such as medical journalists or scientific officers in government and industry.

Structure

- PG Certificate: 4 compulsory core modules
- PG Diploma: 8 modules (4 compulsory core + 2 additional compulsory + 2 elective modules)
- MSc: 9 modules (4 compulsory core modules + 2 additional compulsory + 3 elective modules) + a project report and qualifying examination paper

Study materials

The Epidemiology modules are delivered online through our virtual learning environment, Moodle. The study materials are mainly in the form of interactive computer sessions, while some modules use text-based materials such as study guides. A range of other study resources, including readings from the online library and statistical software (Stata) are also provided. Support is provided primarily through discussion forums and personalised assignment feedback.

Entry requirements

- A first or second class honours degree or equivalent, from a university or other institution acceptable to the University of London, in health-related disciplines or in statistics or another appropriate subject. Work experience in a health sciences or healthcare setting is desirable but not essential;
- Applicants with an appropriate professional or technical qualification in a health-related field, which satisfies the University as a qualification equivalent to a second class honours degree, together with at least three years' relevant experience, may also be considered on an individual basis.

Key information:



Programme directors:

Dr Sarah Cook
Dr Bilal Iqbal
Dr Laura Oakley



Academic queries:

distance@lshtm.ac.uk

General enquiries:

london.ac.uk/contact-us



Fees for 2023/24

PG Certificate:	£9,820
PG Diploma:	£13,300
Master's:	£16,800



lshtm.ac.uk/study/courses/epidemiology-online

For the most up-to-date programme information and entry requirements visit the programme webpage.



Hany Khalifa - Canada/Egypt

"I chose LSHTM as it is one of the most reputable academic institutions in the field of public health and epidemiology with significant contributions to the advancement of public health research. I decided to study Epidemiology to endorse my academic background, get practical experience and make a meaningful contribution to the advancement of science."

Modules

Compulsory core modules (PG Certificate, PG Diploma and MSc)

- EPM101 Fundamentals of Epidemiology
- EPM102 Statistics for Epidemiology
- EPM103 Practical Epidemiology
- EPM105 Writing and Reviewing Epidemiological Papers

Advance/elective modules (PG Diploma and MSc)

Epidemiology advance modules (EPM2):

- EPM201 Study Design: Writing a Grant Application (compulsory for the PG Diploma and MSc)
- EPM202 Statistical Methods in Epidemiology (compulsory for the PG Diploma and MSc)

Epidemiology elective modules (EPM3):

- EPM301 Epidemiology of Infectious Diseases
- EPM302 Modelling and the Dynamics of Infectious Diseases
- EPM304 Advanced Statistical Methods in Epidemiology
- EPM307 Global Epidemiology of Non-Communicable Diseases

Module selection groups:

- CTM202 Trial Designs
- CTM203 Project Management and Research Co-ordination
- CTM204 Regulatory Affairs, Good Clinical Practice and Ethics
- CTM208 Further Statistical Methods in Clinical Trials

- CTM209 Cluster Randomised Trials
- IDM201 Bacterial Infections
- IDM202 Nutrition & Infection
- IDM203 Parasitology
- IDM205 Healthcare-Associated Infection
- IDM213 Immunology of Infection and Vaccines
- IDM215 Water, Sanitation and Hygiene
- IDM301 Epidemiology & Control of Infectious Diseases
- IDM501 HIV
- IDM502 Tuberculosis
- IDM503 Malaria
- PHM201 Health Decision Science
- PHM203 Economic Analysis for Health Policy
- PHM204 Economic Evaluation
- PHM205 Environmental Epidemiology
- PHM206 Environmental Health Policy
- PHM207 Health Care Evaluation
- PHM209 Globalisation and Health
- PHM210 Managing Health Services
- PHM211 Medical Anthropology in Public Health
- PHM212 Organisational Management
- PHM213 Principles & Practice of Health Promotion
- PHM214 Conflict and Health
- PHM215 History and Health
- PHM216 Sexual Health
- PHM219 Evaluation of Public Health Interventions

Project module (MSc only)

- EPM500 Project Report

Module specifications:

To view the module specifications for, please visit lshtm.ac.uk/study/modules-dl

Note that restrictions and prerequisites may apply to some of the modules.

Global Health Policy

(PG Certificate, PG Diploma and MSc)

This programme provides an in-depth understanding of the planning and delivery of policy responses to global health concerns and issues. It focuses on approaches to effective policy-making which contribute to the protection and promotion of population health in a globalising world, at both national and transnational levels.

The programme will provide you with a solid foundation in the approaches to and practices related to global health policy, as well as an understanding of the institutional structures and governance mechanisms that address global health issues.

Who is it for?

This directed self-study programme is suitable for students and professionals from both health and non-health backgrounds who wish to understand more about this area of policy. It will be of particular value to those seeking policy-related positions in health organisations, health-related research institutions, NGOs and private consultancies.

Structure

- PG Certificate: 4 compulsory core modules
- PG Diploma: 8 modules (4 compulsory core + 4 elective modules)
- MSc: 10 modules (4 compulsory core + 5 elective modules + project) or 12 modules (4 compulsory core + 8 elective modules)

Study materials

The Global Health Policy modules are delivered using a variety of study resources including lecture notes, study activities and a selection of essential and recommended readings. The majority of these materials are provided online via our virtual learning environment, Moodle, where students can communicate with tutors and fellow students via discussion forums.

Entry requirements

All applicants are required to have a first- or second-class honours degree or the equivalent, from a university or other institution acceptable to the University of London, in:

- Either a scientific subject (e.g. biology, medicine, nursing or pharmacy);
- Or a social science subject such as anthropology, demography, development studies, economics, environmental studies, human rights, geography, international politics, international relations, law, sociology, policy studies, politics, political science or water and sanitation.

Applicants who do not satisfy the above requirements may still be admitted at the discretion of the University of London on the basis of their academic qualifications, work experience and references.

Key information:



Programme directors:

Dr Preslava Stoeva
Dr Helen Walls



Academic queries:

distance@lshtm.ac.uk

General enquiries:

london.ac.uk/contact-us



Fees for 2023/24

PG Certificate:	£9,820
PG Diploma:	£13,300
Master's:	£16,800



lshtm.ac.uk/study/courses/global-health-policy-online

For the most up-to-date programme information and entry requirements visit the programme webpage.



Ravi Reemaul · Trinidad and Tobago/Canada

"LSHTM was well known to me as one of the best public health schools in the world. I have loved every single module and learned so much about international health politics and how to critically evaluate the current status in global health. My knowledge is already helping me to make sound decisions in the field, especially when working with scarce resources and in complex settings."

Modules

Compulsory core modules (PG Certificate, PG Diploma and MSc)

- GHM101 The Economics of Global Health Policy
- GHM102 The Politics of Global Health Policy
- GHM103 Environmental Change and Global Health Policy
- GHM104 Issues in Global Health Policy

Elective modules (PG Diploma and MSc)

- CTM203 Project Management and Research Coordination
- CTM204 Regulatory Affairs, Good Clinical Practice and Ethics
- CTM205 Data Management
- EPM101 Fundamentals of Epidemiology
- EPM307 Global Epidemiology of Non-Communicable Diseases
- GHM201 Health Systems
- GHM202 Global Mental Health
- GHM203 Research Design and Methods for the Analysis of Global Health Policy
- GHM204 Law and Global Health Policy
- GHM300 Project Module (MSc only)
- IDM202 Nutrition and Infection
- IDM213 Immunology of Infection and Vaccines
- IDM301 Epidemiology and Control of Infectious Diseases

- IDM501 HIV
- IDM502 Tuberculosis
- IDM503 Malaria
- PHM201 Health Decision Science
- PHM205 Environmental Epidemiology
- PHM207 Health Care Evaluation
- PHM211 Medical Anthropology in Public Health
- PHM213 Principles and Practice of Health Promotion
- PHM214 Conflict and Health
- PHM215 History and Health
- PHM218 Applied Communicable Disease Control

Module specifications:

To view the module specifications, please visit lshtm.ac.uk/study/modules-dl

Note that restrictions and prerequisites may apply to some of the modules.

Health in Humanitarian Crises

(PG Certificate, PG Diploma and MSc)

Humanitarian crises due to armed conflict, natural disasters, disease outbreaks and other causes are major contributors to ill health and vulnerability worldwide. The persisting effects of crises on health and health systems can undermine decades of social development.

This new programme provides you with the knowledge and skills to improve the health of populations, communities and particular groups within them when these populations are affected by humanitarian crises.

You are encouraged to develop transferable and subject-specific skills to address multi-faceted and current health problems in their local setting, as well as internationally.

Who is it for?

This directed self-study programme will suit practitioners, policy-makers or researchers who wish to deepen their understanding of humanitarian issues and increase their potential for career development in public health. It is aimed at professionals who may already be involved in delivering public health projects in humanitarian crises at community, hospital or district level, in research, in ministries of health or other health- or development-related organisations.

Structure

- PG Certificate: 4 compulsory core modules
- PG Diploma: 8 modules (4 compulsory core + 1 additional compulsory + 3 elective modules)
- MSc: 8 modules (4 compulsory core + 1 additional compulsory + 3 elective modules) + a project report

Study materials

The Health in Humanitarian Crises modules are mostly delivered using materials (e.g. podcasts and texts) developed specifically for the programme and available in our virtual learning environment, Moodle. Students are advised to work through the materials, participate in self-learning activities and engage in discussions that take place within the module forums on Moodle.

Entry requirements

All applicants are required to have:

- Either a first or second class honours degree, or the equivalent, from a university or other institution acceptable to the University of London, in a subject appropriate to the programme;
- Or an appropriate professional or technical qualification, plus three years' relevant experience.

Key information:



Programme directors:

Professor Francesco Checchi
Dr Bhargavi Rao
Dr Neha Singh



Academic queries:

distance@lshtm.ac.uk

General enquiries:

london.ac.uk/contact-us



Fees for 2023/24

PG Certificate:	£9,820
PG Diploma:	£13,300
Master's:	£16,800



lshtm.ac.uk/study/masters/health-humanitarian-crises-online

The information provided on this page is provisional and subject to validation of the new programme. For the most up-to-date programme information and entry requirements visit the programme webpage.



Professor Francesco Checchi Programme Director

"We are very excited to offer this new programme for both newcomers wishing to enter this field, and experienced staff looking for opportunities to extend their skills. The content focuses on real-life examples and dilemmas, and aims to address the operational, programmatic and technical needs in such crises. The online format allows practitioners to combine their working life with their learning, and participants will be strongly encouraged to share their own lived experiences as part of the teaching process."

Modules

Compulsory core modules may include (PG Certificate, PG Diploma and MSc)

- IDM101 Principles of Biostatistics and Epidemiology
- PHM214 Conflict and Health
- HHM101 Public Health Information in Humanitarian Crises
- HHM102 Design and Planning of Humanitarian Health Projects

Additional compulsory modules may include (PG Diploma and MSc)

- HHM201 Management and Evaluation of Humanitarian Health Projects

Elective modules may include (PG Diploma and MSc)

- GHM102 The Politics of Global Health Policy
- GHM104 Issues in Global Health Policy
- GHM202 Global Mental Health
- IDM104 Control of Infectious Diseases
- IDM202 Nutrition and Infection
- IDM215 Water, Sanitation and Hygiene
- IDM301 Epidemiology and Control of Infectious Diseases
- PHM204 Economic Evaluation
- PHM211 Medical Anthropology in Public Health
- PHM212 Organisational Management
- PHM218 Applied Communicable Disease Control

Project module (MSc only)

- HHM300 Project Report

Module specifications:

To view the module specifications, please visit lshtm.ac.uk/study/modules-dl

Note that restrictions and prerequisites may apply to some of the modules.

Infectious Diseases

(PG Certificate, PG Diploma and MSc)

This programme draws upon LSHTM's long tradition in the study of clinical and epidemiological aspects of infectious and tropical diseases.

It provides a broad understanding of infectious diseases through its core modules in biology, biostatistics, epidemiology and the control of infectious diseases, together with the subsequent opportunity for specialised study in areas of infectious diseases.

The programme will develop your academic insight into the biology of infective agents and their interaction with the host. You will also be encouraged to develop a range of transferable and subject-specific expertise which will enable you to develop rational strategies for the control of infectious diseases.

Who is it for?

This directed self-study programme is relevant for scientists and in-service health professionals wanting to broaden their knowledge of infectious diseases or to update their expertise in a fast-evolving field. It is equally suited to recent graduates, established professionals who wish to bring their knowledge up-to-date, or to those wishing to change careers. The Infectious Diseases modules require prior knowledge of biochemistry, cell biology, genetics, immunology and microbiology.

Structure

- PG Certificate: 4 compulsory core modules
- PG Diploma: 8 modules (4 compulsory core + 4 elective modules)
- MSc: 9 modules (4 compulsory core + 5 elective modules) plus a project report or 12 modules (4 compulsory core + 8 elective modules)

Study materials

The Infectious Diseases modules are primarily delivered using study guides that introduce each topic in the form of lessons, activities and self-assessment questions. The guides include tools to aid development of the skills of information search, comprehension and analysis and the generation of original and thoughtful assignments. Students are encouraged to communicate with tutors and fellow students via discussion forums in our virtual learning environment, Moodle.

Entry requirements

All applicants are required to have:

- A first or second class honours degree or the equivalent, from a university or other institution acceptable to the University of London, in a biological sciences subject (e.g. biology, medicine, nursing, dentistry, veterinary science, pharmacy etc.) or in another scientific discipline which has, in the opinion of the University, included suitable preliminary training.

Applicants with an appropriate technical qualification and work experience will also be considered.

Key information:



Programme directors:

Dr Patricia Gorak-Stolinska
Dr Anita Skinner



Academic queries:

distance@lshtm.ac.uk

General enquiries:

london.ac.uk/contact-us



Fees for 2023/24

PG Certificate:	£9,820
PG Diploma:	£13,300
Master's:	£16,800



lshtm.ac.uk/study/courses/infectious-diseases-online

For the most up-to-date programme information and entry requirements visit the programme webpage.



Maria Dreher - Brazil/Canada

"I chose LSHTM because of its prestigious reputation, ground-breaking research and professors. LSHTM was always my dream school, and I am so proud to be part of it. I chose Infectious Disease because I always loved immunology and virology, but in my last year of undergrad I found a passion in epidemiology and public health."

Modules

Compulsory core modules (PG Certificate, PG Diploma and MSc)

- IDM101 Principles of Biostatistics and Epidemiology
- IDM102 Principles of Biology
- IDM103 Biology of Infectious Diseases
- IDM104 Control of Infectious Diseases

Elective modules (PG Diploma and MSc)

Infectious Diseases elective modules (IDM):

- IDM201 Bacterial Infections
- IDM202 Nutrition & Infection
- IDM203 Parasitology
- IDM204 Viral Infections
- IDM205 Healthcare-Associated Infection

- IDM213 Immunology of Infection and Vaccines
- IDM215 Water, Sanitation and Hygiene
- IDM301 Epidemiology & Control of Infectious Diseases
- IDM501 HIV
- IDM502 Tuberculosis
- IDM503 Malaria
- IDM600 Project Report (MSc only)
- IDM601 Research Design, Management & Analysis

Public Health elective modules (PHM2):

- PHM207 Health Care Evaluation
- PHM211 Medical Anthropology in Public Health
- PHM213 Principles & Practice of Health Promotion
- PHM218 Applied Communicable Disease Control

Module specifications:

To view the module specifications, please visit lshtm.ac.uk/study/modules-dl

Note that restrictions and prerequisites may apply to some of the modules.

Public Health

(PG Certificate, PG Diploma and MSc)

This programme provides the knowledge and skills to address diverse public health issues in low-, middle- and high-income countries. The curriculum allows you to opt for a broad range of knowledge by taking the general pathway or to specialise in one of four streams: Environment & Health, Health Economics, Health Promotion or Health Services Management.

The programme draws on our long history of international work and expertise in a variety of fundamental disciplines in the field of public health.

Who is it for?

This directed self-study programme will benefit those who want to develop a deeper understanding of public health issues and/or broaden their knowledge in this area. Many of our students are health professionals in service or policy roles. Others work in development, community services, government, research or teaching.

Structure

- PG Certificate: 6 modules (4 compulsory core PHM1 + 2 further core PHM1 modules)
- PG Diploma: 10 modules (4 compulsory core PHM1 + 2 further core PHM1 + 4 elective modules)
- MSc: 11 modules plus a project report or 14 modules

Study materials

The Public Health modules are delivered through a range of resources and materials in our virtual learning environment, Moodle. Students are encouraged to work through the materials, participate in directed self-learning activities and engage in discussion forums with tutors and fellow students.

Entry requirements

All applicants are required to have:

- A first or second class honours degree or equivalent in health-related disciplines or another appropriate subject, from a university or other institution acceptable to the University of London, and a minimum of one year's relevant work experience.

Applicants who do not satisfy the above requirements may still be admitted at the discretion of the University of London on the basis of academic qualification, work experience and references.

Key information:



Programme directors:

Dr Ros Plowman

Dr Marcus Keogh-Brown



Academic queries:

distance@lshtm.ac.uk

General enquiries:

london.ac.uk/contact-us



Fees for 2023/24

PG Certificate: £9,820

PG Diploma: £13,300

Master's: £16,800



lshtm.ac.uk/study/courses/public-health-online

For the most up-to-date programme information and entry requirements visit the programme webpage.



Nkoli Nnamou · Nigeria

"Several global authorities in the field of public health have some connection to LSHTM. The distance learning programme also allows one to stagger tuition payments per module, offering flexibility within the allotted time for course completion – 2 to 5 years. Studying from my home country allowed me to work while improving my knowledge in public health."

Modules

PHM1 compulsory core modules (PG Certificate, PG Diploma and MSc - all streams)

- PHM101 Basic Epidemiology
- PHM102 Basic Statistics for Public Health and Policy
- PHM103 Introduction to Health Economics
- PHM104 Principles of Social Research

PHM1 further core modules (PG Certificate, PG Diploma and MSc)

- PHM105 Issues in Public Health (*Gen)
- PHM106 Environment, Health & Sustainable Development (*E&H)
- PHM107 Foundations for Health Promotion (*HP)
- PHM108 Health Services (*HSM)
- PHM109 Health Policy, Process & Power

PHM2 elective modules (PG Diploma and MSc)

- PHM201 Health Decision Science
- PHM203 Economic Analysis for Health Policy (*HE)
- PHM204 Economic Evaluation (*HE)
- PHM205 Environmental Epidemiology
- PHM206 Environmental Health Policy (*E&H)
- PHM207 Health Care Evaluation
- PHM209 Globalisation & Health
- PHM210 Managing Health Services
- PHM211 Medical Anthropology in Public Health
- PHM212 Organisational Management (*HSM)
- PHM213 Principles and Practice of Health Promotion (*HP)

- PHM214 Conflict and Health
- PHM215 History and Health
- PHM216 Sexual Health
- PHM218 Applied Communicable Disease Control
- PHM219 Evaluation of Public Health Interventions

Other elective modules (PG Diploma and MSc)

- EPM202 Statistical Methods in Epidemiology
- GHM201 Health Systems
- GHM202 Global Mental Health
- IDM201 Bacterial Infections
- IDM202 Nutrition and Infection
- IDM203 Parasitology
- IDM205 Healthcare-associated Infection
- IDM213 Immunology of Infection and Vaccines
- IDM215 Water, Sanitation and Hygiene
- IDM301 Epidemiology and Control of Infectious Diseases
- IDM501 HIV
- IDM502 Tuberculosis
- IDM503 Malaria
- PHM305 Project Report (MSc only)

*Compulsory module for indicated MSc stream:

- E&H - Environment & Health stream
- HE - Health Economics stream
- HP - Health Promotion stream
- HSM - Health Services Management stream
- Gen - General stream

Module specifications:

To view the module specifications please visit lshtm.ac.uk/study/modules-dl

Note that restrictions and prerequisites may apply to some of the modules.



"I liked the flexibility and possibility to customise the pace of completing the course."

"Considering that LSHTM is widely known for its well-established and organised distance learning programmes, it was an easy choice. I liked the flexibility and possibility to customise the pace of completing the course, as well as the opportunity of choosing electives from other relevant programmes."

Short Courses

Our short courses are ideal for busy professionals or students who want to refresh existing skills, develop new ones and keep up-to-date with the latest expertise in the field without taking a full programme.

Individual modules

You can study all the modules in our distance learning programmes (with the exception of the project reports and Clinical Trials integrating module) on an individual basis.

These modules are particularly useful for anyone working in NGOs, government and health departments, and as clinicians, researchers, scientists or other professionals who are exposed to the topics covered and would benefit from learning more.

Time commitment

You will receive access to your study materials from the beginning of October. After this, you will be able to study at your own pace through to June, when examinations take place.

Credit transfer

If you complete an individual module and decide to register for a PG Certificate, PG Diploma or MSc, the grades and credits you have gained may be transferred. To qualify, the module must form part of the structure of the programme and the request must be made within three years of completing the formal assessment for the single module.

If you transfer from an individual module to a formal award, you pay the programme registration fee (which doesn't apply for single modules) and then the fee for the remaining components of the programme.

Accessibility

If you do not have the standard academic requirements to register for a formal programme (i.e. PG Certificate, PG Diploma or MSc), you may be asked to take one individual module to be considered for entry.

Entry requirements

If previous experience or qualifications are required for a module, these are listed on the web page for each programme and in the corresponding module specifications (accessible via lshtm.ac.uk/study/modules-dl).

Fees for 2023/24

- Fee per core module (Clinical Trials, Epidemiology, Global Health Policy, Infectious Diseases): £2,500
- Fee per core module (Public Health): £1,710
- Fee per elective module: £2,500

How to apply

Details on how to apply can be found at: lshtm.ac.uk/study/courses/short-courses/modules-dl

Free online courses

We offer a number of free online courses that cover important topics linked to global health and that give an introductory overview at postgraduate level. For an up-to-date list of available courses and dates, visit our website: lshtm.ac.uk/study/free-online-courses

How to Apply

Once you are ready to apply, follow the five easy steps below:

1. Submit your application to University of London online at: london.ac.uk/health
2. University of London will notify you of whether or not you have been accepted. This usually happens within five working days. You will be sent a student reference number by email in case you need to contact University of London about your application.
3. If you are made an offer, you will receive an email with instructions for completing your online registration (usually from June/July).
4. You will have until the registration deadline to accept your offer and pay your initial fees.
5. Begin your studies. You will be given access to LSHTM's online learning site (Moodle) from the beginning of October.

Application deadlines

MSc, PG Dip, PG Cert and individual modules

Epidemiology, Global Health Policy, Health in Humanitarian Crises, Infectious Diseases, Public Health	31 August
---	-----------

Clinical Trials	31 October
-----------------	------------

Registration deadlines

MSc, PG Dip, PG Cert and individual module

Epidemiology, Global Health Policy, Health in Humanitarian Crises, Infectious Diseases, Public Health	30 September
---	--------------

Clinical Trials	30 November
-----------------	-------------

Who to contact?

If you have any questions before submitting your application, you can contact:

Academic queries

For queries about programme content, modules or assessments, contact distance@lshtm.ac.uk

General study enquiries

Contact study@lshtm.ac.uk

Admissions queries

For queries about how to apply, documentary evidence or entry requirements, contact University of London via sid.london.ac.uk

Useful information for applicants

You are welcome to submit your application even if you are yet to sit an exam or you are awaiting results. University of London can begin to process your application without all the evidence, although we make a final decision once all the necessary documentation has been received. If you are unsure as to whether or not you meet our entry requirements, University of London might be able to advise you on this before you submit your online application.

Fees 2023/24

By paying in full when you begin your programme, you will avoid any annual fee increases. But you can also pay for what you plan to study each year at the point of registration, allowing you to spread the cost of your programme.

You can either pay the full fee upfront, covering the registration fee and all module fees.

Master's Degree (MSc)	£16,800
Postgraduate Certificate	£9,820

Or pay the registration fee, plus the fee for each module you are taking in your first year. Then, in subsequent years, you pay the fee for each new module you take.

Initial registration fee	£1,540	£1,540
Fee per advanced module: PG Diploma and MSc	£850	£850
Fee for integrating module (Clinical Trials only)	£1,730	n/a
Fee for blended learning if paying per module	£2,050	£2,050

Fees payable

Fees are subject to annual revision. All fees must be paid in pounds sterling and can be paid in a variety of ways through the University of London. More information at london.ac.uk/fees

Other costs

You may also need to pay local examination centre fees and examination resit fees, if applicable. MSc students who are carrying out a project also need to budget for travel expenses or consumables, depending on the type of project chosen.

Improving Health Worldwide

London School of Hygiene
& Tropical Medicine

Keppel Street, London WC1E 7HT
United Kingdom

lshtm.ac.uk

For study enquiries, please contact:
study@lshtm.ac.uk

 [@LSHTM](https://www.facebook.com/LSHTM)

 [@LSHTM](https://twitter.com/LSHTM)

 [@LSHTM](https://www.instagram.com/LSHTM)

 [lshtm.ac.uk/linkedin](https://www.linkedin.com/company/lshtm)

 [lshtm.ac.uk/youtube](https://www.youtube.com/lshtm)