



UNIVERSITY
OF LONDON

Estranged Students Policy &

Care Leavers Policy

2021/22

campuslife.london.ac.uk

Residential
Life



Contents

4	Introduction
6	Estranged Students Policy
12	Care Leavers Policy
18	Scholarship

Introduction

The University of London federation of member institutions are some of the leading universities in the world and are open to all students no matter the background. For the University's Estranged Students Policy and Care Leavers Policy, I welcome the opportunity to support students from all the Member Institutions so that they can achieve their full potential and have a successful University experience.

I am particularly pleased that we have been able to work closely with some of the Member Institutions and can promote a scholarship to help those students that are experiencing the hardest difficulties and I welcome the opportunity to expand this scholarship in the future.

Andrew Howarth
Director of Residential Accommodation

At the University of London we recognise that young people who are estranged from their biological or adoption parents, or who are care-leavers, can face additional challenges than their peers, when entering higher education. As such, the Intercollegiate Halls of Residence is committed to supporting students to ensure that they receive the help they need in order to have a successful university experience.

We hope that the measures offered in these policies provides some benefit to prospective students and wish any prospective student the best of luck with their studies.

Ravteg Singh Dhesi
Residential Life Manager



Estranged Students Policy



**For the purposes of this policy,
an ‘Estranged Student’ is defined as:**

- A person aged 25 or under at the time of enrolment and has experienced an irrevocable breakdown in their relationship with both of their biological or adoptive parents and often their wider family, for a significant period of time (usually 12 months).
- This includes students who have been living in foyer or hostel accommodation, have been disowned and/or are estranged from their parent/guardian.

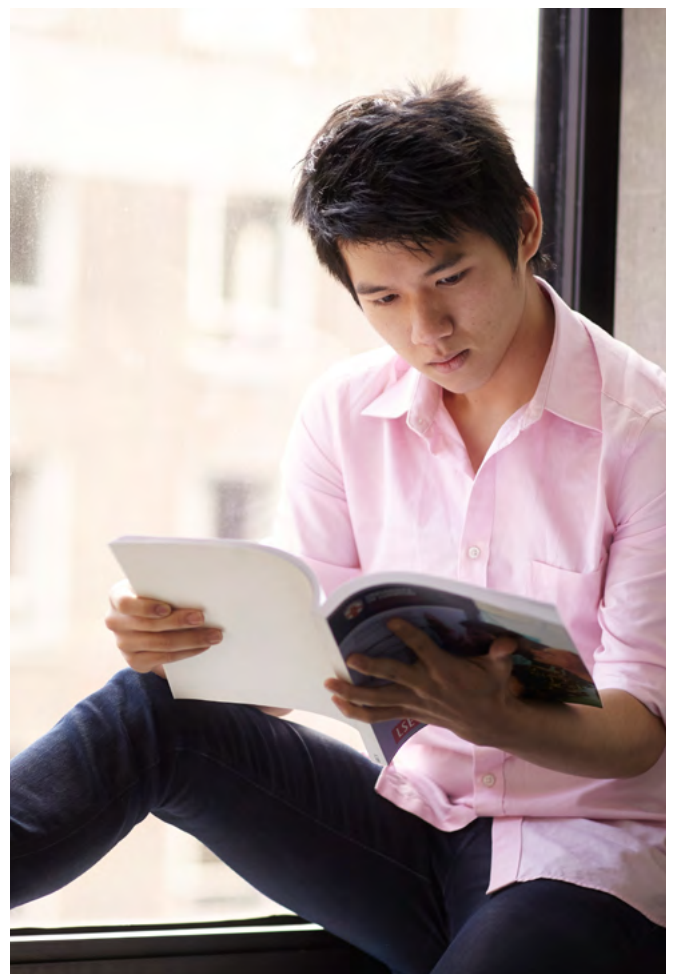
Estranged Student Guarantee

The University of London recognises that young people who are estranged from their biological or adoption parents can face additional challenges than their peers, when entering higher education. As such, the Intercollegiate Halls of Residence is committed to supporting students to ensure that they receive the help they need in order to have a successful university experience and will guarantee the following:

- A telephone call from the Warden at your Intercollegiate Hall of Residence, up to two weeks before you arrive, to answer any questions that you may have;
- The option to pay the deposit for your accommodation in three manageable instalments, with a deadline of final payment by the Friday immediately prior to your arrival;
- The option for early-arrival at your Intercollegiate Hall of Residence (up to five days before Arrivals Day, which usually falls on the second Sunday of September), free of charge, to help you settle into your new accommodation during a quieter period;
- Should you choose the option for early-arrival, the Warden, or a designated Senior Resident Advisor/Resident Advisor will meet and greet you at the nearest underground station to your Intercollegiate Hall to help you find your Intercollegiate Hall of Residence and personally welcome you. This option must be arranged during the telephone call with the Warden to ensure that a member of the Warden's Team is available to meet you. Please note that this option will not be available on the University's main Arrivals Day;
- The Residential Life Manager (or a designated member of staff in their absence) who will act as the first point of contact and provide specific pastoral and emotional support to care leaver students as required, particularly in the period when they are settling in, signposting students to financial, academic support and further health services as appropriate;
- 365-day accommodation in an Intercollegiate Hall of Residence for Estranged Students in their first year of full-time study; and if required
- 365-day accommodation for a further maximum of two years of full-time study in an Intercollegiate Hall of Residence, subject to you having no outstanding debt to the University from the previous year(s); or
- After your first year, if you have no outstanding debt to the University and plan to live in a University of London Student Homes property, the University will act as your guarantor if you need us to.

Eligibility requirements:

1. Provide us with a letter from two of the following professional individuals that can confirm that you have no contact with your family: teacher, solicitor, doctor (e.g. GP), social worker or key worker;
2. We will also require evidence that you have been assessed as 'independent' for Student Finance purposes;
3. Email residential.life@london.ac.uk with the aforementioned supporting evidence, no later than noon on Friday 20th August 2021.



Care Leavers Policy



**For the purposes of this policy,
a ‘Care Leaver’ is defined as:**

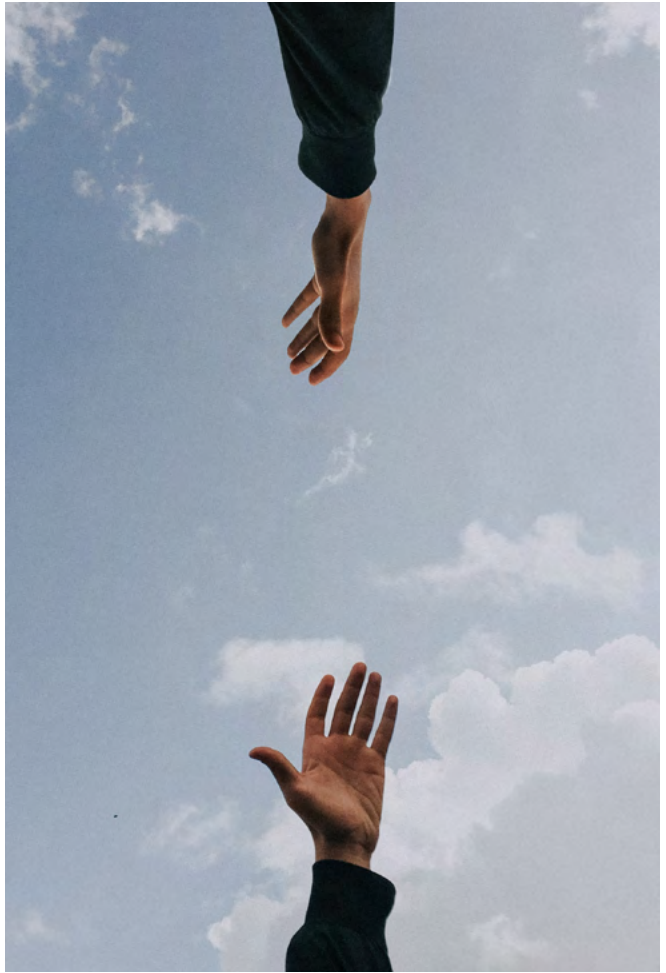
- A person aged 25 or under, whom a local authority has looked after for at least 13 weeks since the age of 14, and whom did the local authority look after at school-leaving age (16) or after that age.
- ‘Looked after’ and/or ‘in the care of a local authority’ includes in foster care, in local authority accommodation, at home under a care order, or under kinship care.

Care Leaver Guarantee

- The University of London recognises that young people in care can face additional challenges than their peers, when entering higher education. As such, the Intercollegiate Halls of Residence is committed to supporting students to ensure that they receive the help they need in order to have a successful university experience and will guarantee the following:
- A telephone call from the Warden at your Intercollegiate Hall of Residence, up to two weeks before you arrive, to answer any questions that you may have;
- The option to pay the deposit for your accommodation in three manageable instalments, with a deadline of final payment by the Friday immediately prior to your arrival;
- The option for early-arrival at your Intercollegiate Hall of Residence (up to five days before Arrivals Day, which usually falls on the second Sunday of September), free of charge, to help you settle into your new accommodation during a quieter period;
- Should you choose the option for early-arrival, the Warden, or a designated Senior Resident Advisor/Resident Advisor will meet and greet you at the nearest underground station to your Intercollegiate Hall to help you find your Intercollegiate Hall of Residence and personally welcome you. This option must be arranged during the telephone call with the Warden to ensure that a member of the Warden's Team is available to meet you. Please note that this option will not be available on the University's main Arrivals Day;
- The Residential Life Manager (or a designated member of staff in their absence) who will act as the first point of contact and provide specific pastoral and emotional support to care leaver students as required, particularly in the period when they are settling in, signposting students to financial, academic support and further health services as appropriate;
- 365-day accommodation in an Intercollegiate Hall of Residence for Care Leavers in their first year of full-time study; and if required
- 365-day accommodation for subsequent continuous years of full-time study in an Intercollegiate Hall of Residence, subject to you having no outstanding debt to the University from the previous year(s) for up to the age 25; or
- After your first year, if you have no outstanding debt to the University and plan to live in a University of London Student Homes property, the University will act as your guarantor if you need us to.

Eligibility requirements:

1. Proof of care leaver status (from your member institution, local authority, social worker or GP);
2. Email residential.life@london.ac.uk with the aforementioned supporting evidence, no later than noon on Friday 20th August 2021.



Care Leaver & Estranged Student Scholarship



Care Leavers & Estranged Student Scholarship 2021/22

The University of London will provide a standard single study bedroom at Nutford House or an en-suite room at College Hall, for one calendar year commencing the start of the 2020/21 academic year, for up to three full-time students, registered at one of the following Member Institutions:

- London School of Economics and Political Science (LSE)
- School of Oriental and African Studies (SOAS)
- Birkbeck, University of London
- School of Advanced Study, University of London

Please note that students from Member Institutions (<https://london.ac.uk/ways-study/study-campus-london/member-institutions>) not listed above, may have access to similar schemes operated by their Member Institution, so are directed to their Member Institution of study for further support.

All applications will be reviewed by a Panel, who will award the Scholarship for up to a maximum of three eligible students. In order to apply, please email residential.life@london.ac.uk with the following:

- Proof of care leaver or estranged status (from your member institution, local authority, social worker or GP);
- A statement (750 - 1000 words) outlining why you wish to apply for the Scholarship and how you feel you would benefit from the award;
- Details of the course that you are studying/intend to study in the 2021/22 academic year

The deadline for all submissions is Wednesday 28th July 2021 at 10 a.m. Applications received after this deadline will not be considered.

We anticipate that demand for these scholarships will outweigh what is currently available to offer. Please note therefore that all decisions made by the Panel will be final and with regret, not open to feedback or appeal.

For further information please visit our
website or contact us at:

Residential Life

Senate House
Malet Street
London
WC1E 7HU

This material can be made available in alternative formats upon request.

Please contact residential.life@london.ac.uk