



AccessAble
Your Accessibility Guide

The new name for DisabledGo

Stewart House

The University of London , 32 Russell Square, London, WC1B 5DN

Visit website (<https://london.ac.uk/>)



Access Guide

Introduction

- The Stewart House is a college administrative building and medical school.

Getting Here

By Road

[View](#)

- The SOAS University of London campus is located in the centre of London in Bloomsbury in the Borough of Camden. The main area of the campus is located south of the A501 between the A4200 and A400.
- There is on street parking available around the area, most of which is pay and display or for residents only. There is shared building parking for Senate House and Stewart House off Russell Square.

By Bus

[View](#)

- The nearest bus stop is Chenies Street (Stop D). The services that run to this stop are 14, 24, 29, 73, 134, 390, N5, N20, N29, N73, N253 and N279.

By Train

[View](#)

- The nearest train station is the London Euston station. This train station is approximately 1km from the SOAS campus via Malet Street. This station is served by the Caledonian Sleeper, Overground, Virgin Trains and West Midland Trains services.

By Underground

[View](#)

- The nearest underground station is Russel Square. This is approximately 350m from the main SOAS Campus area via Russel Square and is served by the Piccadilly Line.

Useful Links

[View](#)

- For more information on bus and underground stations, services and ticketing in and around London.
- [To view the web page described above click here \(opens in new tab\) \(https://tfl.gov.uk\)](https://tfl.gov.uk).
- For more information on national train timetables, services and ticketing.
- [To view the web page described above click here \(opens in new tab\) \(http://www.nationalrail.co.uk/\)](http://www.nationalrail.co.uk/).

Useful Information

- [To see more information on Student Advice Centre please click here \(opens new tab\) \(https://london.ac.uk/ways-study/study-campus-london/student-services-and-support\)](https://london.ac.uk/ways-study/study-campus-london/student-services-and-support).
- Telephone Number: +44 (0)20 7862 8360.

- Offices for the Student Advice Centre are located in Senate House and Stewart House.
- **To see more information on Housing Services please click here (opens new tab)** (<https://housing.london.ac.uk/>).
- Telephone Number: +44 (0)20 7862 8880.
- Email: housing@london.ac.uk.

Building Parking

Photos



1



2



3



4

-
- The building does have its own dedicated parking.

Building Car Park

View

- The car park can be used by staff, visitors and Blue Badge holders.
- There are no parking charges that apply on the day.
- The car park is located to the left of the main entrance.
- The car park type is open air/surface.
- The car park does not have a height restriction barrier.
- Designated Blue Badge parking bays are available.
- There is/are 2 designated parking bay(s) within the car park.
- The Blue Badge bay(s) is/are clearly marked.
- The dimensions of the designated parking bay(s) are 200cm x 600cm (6ft 7in x 19ft 8in).
- The dimensions of the designated bays do not vary in size.
- Parking spaces for Blue Badge holders do not need to be booked in advance.

- The nearest designated bay is 48m (52yd 1ft) from the main entrance.
- The route from the car park to the building is accessible to a wheelchair user with assistance.
- Assistance may be required because there is / are slopes/ramps.
- The dropped kerb between the car park and the building does not have tactile paving.
- The car park surface is tarmac.

Drop Off Point

View

- There is not a designated drop off point.

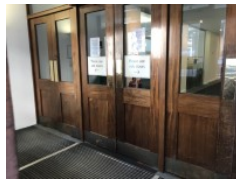
Outside Access (Main Entrance)



Photos



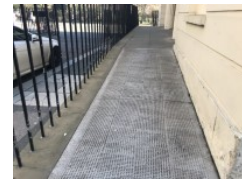
1



2



3



4



5



6

Entrance

View

- This information is for the entrance located at the front of the building.
- There is ramped/sloped or stepped access at this entrance.
- There is not a bell/buzzer.
- There is an intercom.

- The height of the intercom is 140cm (4ft 7in).
- There is a canopy or recess which provides weather protection at this entrance.
- The main door(s) open(s) automatically (away from you).
- The door(s) is/are push pad activated.
- The door(s) is / are double.
- The width of the door opening is 136cm (4ft 6in).
- There is a second set of doors.
- The door(s) open(s) automatically (away from you).
- The door(s) is / are push pad activated.
- The door(s) is / are double.
- The width of the door opening is 136cm (4ft 6in).

Ramp/Slope

View

- There is a ramp/slope at this entrance.
- The ramp/slope is located to the right as you face the entrance.
- The ramp or slope does bypass the step(s).
- The ramp/slope gradient is steep.
- The ramp is permanent.
- There is not a level landing at the top of the ramp.
- The ramp does have handrails.
- The handrails are on the left going up the ramp.
- The width of the ramp is 130cm (4ft 3in).

Step(s)

View

- There is a / are step(s) at this entrance.
- The step(s) is / are located to the left as you face the entrance.
- There is / are 6 step(s) to access the entrance.
- There is not tactile paving at the top and bottom of the step(s).
- The step(s) is / are not clearly marked.

- The step(s) is / are medium height (11cm - 17cm).
- The steps do have handrails.
- The handrails are on the right going up the step(s).

Getting Around

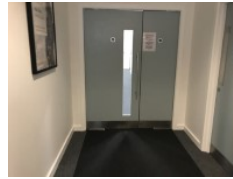
Photos



1



2



3



4



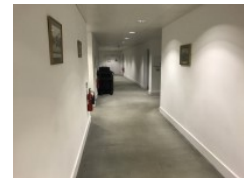
5



6



7



8

Access

View

- There is step free access throughout the building via lift(s).
- There are doors in corridors which have to be opened manually.

Getting Around

View

- There is clear signage for building facilities/areas in the foyer/reception area.
- There is clearly written and pictorial directional signage at key points of circulation routes.
- There is good colour contrast between the walls and floor in all areas.
- The lighting levels are good.
- This building does not play background music.
- There is a hearing assistance system.

- The system is a portable loop.
- The hearing loop is located at the Stewart House reception.
- The hearing system is available only on request.
- Staff are trained to use the hearing system.

Reception (Stewart House Reception)



Photos



1

-
- Stewart House Reception is located ahead on entrance.
 - The desk is 5m (5yd 1ft) from the main entrance.
 - The reception area is clearly visible from the entrance.
 - There is step free access to this reception area.
 - The lighting levels in the reception area are medium.
 - The reception desk/counter is low (76cm or lower).
 - There is not a clear knee recess beneath the low/lowered counter.
 - The desk is staffed.
 - The bell is at a suitable height for a wheelchair user.
 - There is a hearing assistance system.
 - The type of system is a portable loop.
 - The hearing system is available only on request.
 - The hearing assistance system is signed.
 - Staff are trained to use the hearing system.

Accessible Toilet (Lower Ground)



Photos



1



2

-
- Accessible toilet facilities are available.

Location and Access

View

- The toilet is not for the sole use of disabled people.
- There is pictorial signage on or near the toilet door.
- This accessible toilet is approximately 42m (45yd 2ft) from the lift.
- This accessible toilet is located to the far left of the lower ground floor.
- There is level access to this accessible toilet.
- This is by lift.

Features and Dimensions

View

- This is a shared toilet.
- A key is not required for the accessible toilet.
- The door opens outwards.
- The door is locked by a locking handle.
- The width of the accessible toilet door is 89cm (2ft 11in).
- The door is heavy.
- The dimensions of the accessible toilet are 180cm x 246cm (5ft 11in x 8ft 1in).
- There is a clear 150cm x 150cm manoeuvring space in the accessible toilet.
- There is a lateral transfer space.
- As you face the toilet pan the transfer space is on the left.
- The lateral transfer space is 110cm (3ft 7in).

- There is a dropdown rail on the transfer side.
- There is a flush on the transfer side.
- The tap type is lever.
- There is a mixer tap.
- There is not an emergency pull cord alarm in the cubicle.
- Disposal facilities are available in the cubicle.
- There is a/are female sanitary and open waste paper bin disposal units.
- There is not a/are not coat hook(s).

Position of Fixtures

View

- Wall mounted grab rails are available for the toilet.
- As you face the toilet the wall-mounted grab rails are on both sides.
- There is not a shelf within the accessible toilet.
- There is a mirror.
- Mirrors are not placed at a lower level or at an angle for ease of use.
- The height of the toilet seat above floor level is 45cm (1ft 6in).
- There is a hand dryer.
- The hand dryer cannot be reached from seated on the toilet.
- The hand dryer is not placed higher than 100cm (3ft 3in).
- There is a towel dispenser.
- The towel dispenser cannot be reached from seated on the toilet.
- The towel dispenser is placed higher than 100cm (3ft 3in).
- The height of the towel dispenser is 120cm (3ft 11in).
- There is a toilet roll holder.
- The toilet roll holder can be reached from seated on the toilet.
- The toilet roll holder is not placed higher than 100cm (3ft 3in).
- There is a wash basin.
- The wash basin can be reached from seated on the toilet.

- The wash basin is not placed higher than 74cm (2ft 5in).
- There is a soap dispenser.
- The soap dispenser can be reached from seated on the toilet.
- The height of the soap dispenser is 90cm.

Colour Contrast and Lighting

View

- The contrast between the internal door and wall is good.
- The contrast between the external door and wall is good.
- The contrast between the wall-mounted grab rail(s) and wall is good.
- The contrast between the dropdown rail(s) and wall is good.
- The toilet seat colour contrast is poor.
- The contrast between the walls and floor is good.
- The lighting levels are medium.

Standard Toilet(s) (Ground Floor)

Photos



1



2



3



4



5



6

Location of Standard Toilet(s)

View

- There are male and female standard toilets facilities on the lower ground floor, the ground floor, the first floor, the second floor, the

third floor and the fourth floor.

Standard Toilet Surveyed

[View](#)

- A male standard toilet was surveyed.
- The toilet surveyed is located on the ground floor along the corridor.
- There is a female standard toilet in the same location.
- There is step free access to the standard toilet(s) surveyed from the entrance.
- The standard toilet surveyed is approximately 15m from the main entrance.
- There is not a/are not cubicle(s) suitable for ambulant disabled people in the standard toilet(s) surveyed.
- Lighting levels in the standard toilet surveyed are good.

Accessible Toilet (Ground Floor)



Photos



1



2

-
- Accessible toilet facilities are available.

Location and Access

[View](#)

- The toilet is for the sole use of disabled people.
- There is pictorial signage on or near the toilet door.
- This accessible toilet is approximately 18m (19yd 2ft) from the main entrance.
- This accessible toilet is located in the lift foyer.

- There is level access to this accessible toilet.

Features and Dimensions

View

- This is a shared toilet.
- A key is required for the accessible toilet.
- The key is a radar key.
- The key can be obtained from reception.
- The door opens outwards.
- The door is locked by a locking handle.
- The width of the accessible toilet door is 88cm (2ft 11in).
- The door is heavy.
- The dimensions of the accessible toilet are 200cm x 233cm (6ft 7in x 7ft 8in).
- There is a clear 150cm x 150cm manoeuvring space in the accessible toilet.
- There is a lateral transfer space.
- As you face the toilet pan the transfer space is on the right.
- The lateral transfer space is 100cm (3ft 3in).
- There is a dropdown rail on the transfer side.
- There is a flush on the transfer side.
- The tap type is lever.
- There is a mixer tap.
- There is an emergency pull cord alarm in the cubicle.
- The emergency pull cord alarm is not fully functional.
- The alarm was out of reach (higher than 10cm (4") from floor) when surveyed.
- Disposal facilities are available in the cubicle.
- There is a/are female sanitary and open waste paper bin disposal units.
- There is a/are coat hook(s).
- The height of the coat hook is 133cm from the floor.

Position of Fixtures

View

- Wall mounted grab rails are available for the toilet.
- As you face the toilet the wall-mounted grab rails are on both sides.
- There is not a shelf within the accessible toilet.
- There is a mirror.
- Mirrors are not placed at a lower level or at an angle for ease of use.
- The height of the toilet seat above floor level is 48cm (1ft 7in).
- There is a hand dryer.
- The hand dryer cannot be reached from seated on the toilet.
- The hand dryer is not placed higher than 100cm (3ft 3in).
- There is a towel dispenser.
- The towel dispenser cannot be reached from seated on the toilet.
- The towel dispenser is placed higher than 100cm (3ft 3in).
- The height of the towel dispenser is 107cm (3ft 6in).
- There is a toilet roll holder.
- The toilet roll holder can be reached from seated on the toilet.
- The toilet roll holder is not placed higher than 100cm (3ft 3in).
- There is a wash basin.
- The wash basin can be reached from seated on the toilet.
- The wash basin is not placed higher than 74cm (2ft 5in).
- There is a soap dispenser.
- The soap dispenser can be reached from seated on the toilet.
- The height of the soap dispenser is 100cm.

Colour Contrast and Lighting

View

- The contrast between the internal door and wall is good.
- The contrast between the external door and wall is good.

- The contrast between the wall-mounted grab rail(s) and wall is good.
- The contrast between the dropdown rail(s) and wall is good.
- The toilet seat colour contrast is poor.
- The contrast between the walls and floor is good.
- The lighting levels are medium.

Accessible Toilet (Second Floor)



Photos



1



2

-
- Accessible toilet facilities are available.

Location and Access

[View](#)

- The toilet is not for the sole use of disabled people.
- There is pictorial signage on or near the toilet door.
- This accessible toilet is approximately 16m (17yd 1ft) from the lift.
- This accessible toilet is located in the reception area.
- There is level access to this accessible toilet.
- This is by lift.

Features and Dimensions

[View](#)

- This is a shared toilet.
- A key is not required for the accessible toilet.
- The door opens outwards.
- The door is locked by a locking handle.

- The width of the accessible toilet door is 88cm (2ft 11in).
- The door is heavy.
- The dimensions of the accessible toilet are 153cm x 215cm (5ft x 7ft 1in).
- There is not a clear 150cm x 150cm manoeuvring space in the accessible toilet.
- There is a lateral transfer space.
- As you face the toilet pan the transfer space is on the right.
- The lateral transfer space is 83cm (2ft 9in).
- There is no dropdown rail for the toilet.
- There is a flush on the transfer side.
- The tap type is lever.
- There is a mixer tap.
- There is an emergency pull cord alarm in the cubicle.
- The emergency pull cord alarm is not fully functional.
- The alarm was out of reach (higher than 10cm (4") from floor) when surveyed.
- Disposal facilities are available in the cubicle.
- There is a/are female sanitary and open waste paper bin disposal units.
- There is a/are coat hook(s).
- The height of the coat hook is 130cm from the floor.

Position of Fixtures

View

- Wall mounted grab rails are available for the toilet.
- As you face the toilet the wall-mounted grab rails are on the left.
- There is not a shelf within the accessible toilet.
- There is a mirror.
- Mirrors are not placed at a lower level or at an angle for ease of use.
- The height of the toilet seat above floor level is 48cm (1ft 7in).

- There is a hand dryer.
- The hand dryer cannot be reached from seated on the toilet.
- The hand dryer is not placed higher than 100cm (3ft 3in).
- There is a towel dispenser.
- The towel dispenser cannot be reached from seated on the toilet.
- The towel dispenser is not placed higher than 100cm (3ft 3in).
- There is a toilet roll holder.
- The toilet roll holder can be reached from seated on the toilet.
- The toilet roll holder is not placed higher than 100cm (3ft 3in).
- There is a wash basin.
- The wash basin can be reached from seated on the toilet.
- The wash basin is not placed higher than 74cm (2ft 5in).
- There is a soap dispenser.
- The soap dispenser can be reached from seated on the toilet.
- The height of the soap dispenser is 108cm.

Colour Contrast and Lighting

[View](#)

- The contrast between the internal door and wall is good.
- The contrast between the external door and wall is good.
- The contrast between the wall-mounted grab rail(s) and wall is good.
- The toilet seat colour contrast is poor.
- The contrast between the walls and floor is good.
- The lighting levels are medium.

Accessible Toilet (Fourth Floor)



Photos



1



2

-
- Accessible toilet facilities are available.

Location and Access

View

- The toilet is not for the sole use of disabled people.
- There is pictorial signage on or near the toilet door.
- This accessible toilet is approximately 3m (3yd 10in) from the lift.
- This accessible toilet is located ahead on exiting the lift on the fourth floor.
- There is level access to this accessible toilet.
- This is by lift.

Features and Dimensions

View

- This is a shared toilet.
- A key is not required for the accessible toilet.
- The door opens outwards.
- The door is locked by a locking handle.
- The width of the accessible toilet door is 88cm (2ft 11in).
- The door is heavy.
- The dimensions of the accessible toilet are 255cm x 213cm (8ft 4in x 6ft 12in).
- There is a clear 150cm x 150cm manoeuvring space in the accessible toilet.
- There is a lateral transfer space.
- As you face the toilet pan the transfer space is on the right.
- The lateral transfer space is 190cm (6ft 3in).
- There is a dropdown rail on the transfer side.

- There is a flush on the transfer side.
- The tap type is lever.
- There is a mixer tap.
- There is an emergency pull cord alarm in the cubicle.
- The emergency pull cord alarm is not fully functional.
- The alarm was out of reach (higher than 10cm (4") from floor) when surveyed.
- Disposal facilities are available in the cubicle.
- There is a/are female sanitary and open waste paper bin disposal units.
- There is a/are coat hook(s).
- The height of the coat hook is 163cm from the floor.

Position of Fixtures

View

- Wall mounted grab rails are available for the toilet.
- As you face the toilet the wall-mounted grab rails are on the left.
- There is not a shelf within the accessible toilet.
- There is a mirror.
- Mirrors are not placed at a lower level or at an angle for ease of use.
- The height of the toilet seat above floor level is 49cm (1ft 7in).
- There is not a hand dryer.
- There is a towel dispenser.
- The towel dispenser cannot be reached from seated on the toilet.
- The towel dispenser is placed higher than 100cm (3ft 3in).
- The height of the towel dispenser is 103cm (3ft 5in).
- There is a toilet roll holder.
- The toilet roll holder can be reached from seated on the toilet.
- The toilet roll holder is placed higher than 100cm (3ft 3in).
- The height of the toilet roll holder is 102cm (3ft 4in).
- There is a wash basin.

- The wash basin can be reached from seated on the toilet.
- The wash basin is placed higher than 74cm (2ft 5in).
- The height of the wash basin is 75cm (2ft 6in).
- There is a soap dispenser.
- The soap dispenser can be reached from seated on the toilet.
- The height of the soap dispenser is 100cm.

Colour Contrast and Lighting

[View](#)

- The contrast between the internal door and wall is good.
- The contrast between the external door and wall is good.
- The contrast between the wall-mounted grab rail(s) and wall is good.
- The contrast between the dropdown rail(s) and wall is good.
- The toilet seat colour contrast is poor.
- The contrast between the walls and floor is good.
- The lighting levels are medium.

Accessible Shower (Fourth Floor)



Photos



1

-
- Accessible shower facilities are available.
 - The accessible shower(s) surveyed is/are located on the fourth floor.
 - There is level access to the services from the accessible shower facilities.

Comments

[View](#)

- The accessible shower is within the accessible toilet on the fourth floor.

Lift



Photos



1



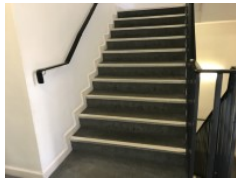
2

-
- There is a lift for public use.
 - The lift is located in the foyer off the reception.
 - The lift is a standard lift.
 - The floors which are accessible by this lift are LG, G, 1, 2, 3 and 4.
 - Wall mounted information boards are provided at lift landings.
 - The weight limit for the lift is 750kg.
 - The lift is approximately 24m (26yd 9in) from the main entrance.
 - Staff do not need to be notified for use of the lift.
 - The clear door width is 80cm (2ft 7in).
 - The dimensions of the lift are 113cm x 147cm (3ft 8in x 4ft 10in).
 - There are not separate entry and exit doors in the lift.
 - There is a mirror to aid reversing out of the lift.
 - The lift does have a visual floor indicator.
 - The lift does have an audible announcer.
 - The lift does have a hearing loop system.
 - The lift does not have Braille markings.
 - The lift does have tactile markings.

- The controls for the lift are within 90cm - 120cm from the floor.
- The lighting level in the lift is medium.

Other Floors

Photos



1



2

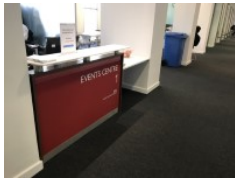
Steps

View

- The floors which are accessible by stairs are LG, G, 1, 2, 3 and 4.
- The stairs are located in the lift foyer.
- The stairs are approximately 5m from the lift.
- There are 15+ steps between floors.
- There are manual, heavy, single doors to access the stairwell on all floors.
- The lighting levels are medium.
- The steps are clearly marked.
- The steps are medium height (11cm - 17cm).
- The steps do have handrails.
- The steps have a handrail on both sides.
- There is a landing.
- There are four identical staircases within the building.

Reception (Events Centre 1)

Photos



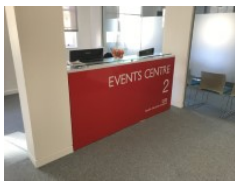
1

-
- Events Centre 1 is located to the front of the venue on the first floor.
 - The desk is 12m (13yd 4in) from the lift.
 - Clear signage for the reception area is not visible from the entrance.
 - There is step free access to this reception area.
 - The lighting levels in the reception area are medium.
 - The reception desk/counter is medium height (77cm - 109cm).
 - There is a low section of the counter (76cm or below) available.
 - There is a clear knee recess beneath the low/lowered counter.
 - The desk is staffed.
 - There is not a hearing assistance system.

Reception (Events Centre 2)



Photos



1

-
- Events Centre 2 is located to the front of the building on the second floor.
 - The desk is 22m (24yd 2in) from the lift.
 - Clear signage for the reception area is visible from the entrance.
 - There is step free access to this reception area, via lift.
 - The lighting levels in the reception area are medium.
 - The reception desk/counter is high (110cm+).

- There is not a low section of the counter (76cm or below) available.
- The desk is staffed.
- There is not a hearing assistance system.