



**AccessAble**  
Your Accessibility Guide

The new name for DisabledGo

---

# Warburg Institute

The University of London, Woburn Square, London, WC1H 0AB

020 7862 8360 (tel:020 7862 8360)

Visit website (<https://london.ac.uk/>)



## Access Guide

### Introduction

- Services / facilities within the building include Warburg Library, Iconography Library, Teaching and Meeting Rooms.

## Opening Times (October - July)

- Monday 09:00 - 20:00.
- Tuesday 09:00 - 20:00.
- Wednesday 09:00 - 20:00.
- Thursday 09:00 - 20:00.
- Friday 09:00 - 18:00.
- Saturday 09:00 - 17:00.
- Sunday Closed.

## Opening Times (August - September)

- Monday 09:00 - 18:00.
- Tuesday 09:00 - 18:00.
- Wednesday 09:00 - 18:00.
- Thursday 09:00 - 18:00.
- Friday 09:00 - 18:00.
- Saturday Closed.
- Sunday Closed.

## Getting Here

### By Road

[View](#)

- Exit the M1 at junction 1 onto the North Circular road, follow until the Brent Cross interchange and turn right here onto the A41. Follow the A41 road to the end and then turn right onto the Finchley Road. Following the A41 still, the road will become the B525, continue to the end of the road

and turn left onto the Outer Circle, then turn left onto Gloucester Gate and then right onto Albany Street. Follow this road till you reach the A501. Take the first exit onto the A400. Follow this road to find the building.

- There is on street parking available around the area, most of which is pay and display or for residents only. There is building parking for Senate House.

## By Bus

[View](#)

- The nearest bus stop is Torrington Place which serves routes 14, 24, 29, 73, 134, 390, N5, N20, N29, N73, N253 and N279.

## By Train

[View](#)

- The nearest train station is Euston. This is approximately a 10 minute walk away.

## By Underground

[View](#)

- The nearest underground station is Goodge Street which is on the Northern Line. This is approximately a 5 minute walk away. Russell Square Underground Station is approximately 9 minutes away and is located on the Piccadilly Line.

# Useful Information

- [To see more information on Student Advice Centre please click here \(opens new tab\) \(https://london.ac.uk/ways-study/study-campus-london/student-services-and-support\).](https://london.ac.uk/ways-study/study-campus-london/student-services-and-support)

- Telephone Number: +44 (0)20 7862 8360.
- Offices for the Student Advice Centre are located in Senate House and Stewart House.
- **To see more information on Housing Services please click here (opens new tab)** (<https://housing.london.ac.uk/>).
- Telephone Number: +44 (0)20 7862 8880.
- Email: [housing@london.ac.uk](mailto:housing@london.ac.uk).

## Building Parking



### Photos



1



2



3



4



5



6

- 
- The building does have its own dedicated parking.

### Building Car Park

**View**

- The car park can be used by permit holders.
- There are no parking charges that apply on the day.
- The car park is located in front of the building.
- The car park type is open air/surface.

- The car park does not have a height restriction barrier.
- Designated Blue Badge parking bays are available.
- There is/are 2 designated parking bay(s) within the car park.
- The Blue Badge bay(s) is/are clearly marked.
- The dimensions of the designated parking bay(s) are 350cm x 500cm (11ft 6in x 16ft 5in).
- The dimensions of the designated bays do vary in size.
- Parking spaces for Blue Badge holders do not need to be booked in advance.
- The nearest designated bay is 15m (16yd 1ft) from the accessible entrance.
- The route from the car park to the building is accessible to a wheelchair user with assistance.
- Assistance may be required because there is / are slopes/ramps.
- The dropped kerb between the car park and the building does not have tactile paving.
- The car park surface is tarmac.
- Clearly signed and/or standard marked parking bays are available.
- The on street standard parking bay(s) is/are located on Gordon Square.

## Drop Off Point

[View](#)

- There is not a designated drop off point.

# Outside Access (Main Entrance)



## Photos



1



2



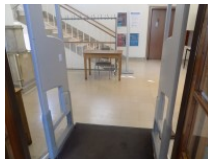
3



4



5



6

---

## Entrance

### View

- This information is for the entrance located at the front of the building off Woburn Square.
- There is stepped access at this entrance.
- There is a bell/buzzer.
- The height of the bell/buzzer is 118cm (3ft 10in).
- There is not an intercom.
- There is a canopy or recess which provides weather protection at this entrance.
- The main door(s) open(s) away from you (push).
- The door(s) is / are double.
- The door(s) is / are heavy.
- The width of the door opening is 115cm (3ft 9in).
- There is a second set of doors.
- The door(s) open(s) towards you (pull).

- The door(s) is / are double.
- The door(s) is / are heavy.
- The width of the door opening is 170cm (5ft 7in).

## Step(s)

View

- There is a / are step(s) at this entrance.
- The step(s) is / are located in front and immediately beyond the first entrance door.
- There is / are 6 step(s) to access the entrance.
- There is not tactile paving at the top and bottom of the step(s).
- The step(s) is / are clearly marked.
- The step(s) is / are medium height (11cm - 17cm).
- The steps do have handrails.
- The handrails are on both sides.

## Comments

View

- Only the steps in front of the entrance door have handrails on both sides those beyond it have handrails on the right only.
- Immediately beyond the second set of doors are security barriers with a width of 112cm. These can be seen in photograph 6.

# Outside Access (Accessible Entrance)

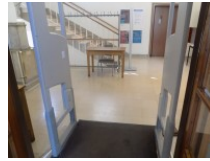
 Photos



1



2



3



4

## Entrance

### View

- This information is for the entrance located at the front of the Building off Woburn Square and to the right of the main entrance.
- There is ramped/sloped access at this entrance.
- There is not a bell/buzzer.
- There is not an intercom.
- A key card is required for access at this entrance.
- The height of the card reader/lock is 85cm (2ft 9in).
- There is not a canopy or recess which provides weather protection at this entrance.
- The main door(s) open(s) automatically (away from you).
- The door(s) is/are push pad activated.
- The door(s) is / are double.
- The width of the door opening is 145cm (4ft 9in).
- There is a small lip on the threshold of the entrance, with a height of 2cm or below.

## Ramp/Slope

### View

- There is a ramp/slope at this entrance.
- The ramp/slope is located to the right as you face the entrance.



- The ramp/slope gradient is slight.
- The ramp is permanent.
- There is not a level landing at the top of the ramp.
- The ramp does have handrails.
- The handrails are on both sides.
- The width of the ramp is 107cm (3ft 6in).

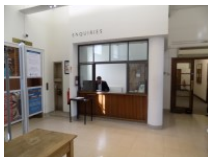
## Comments

[View](#)

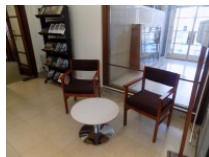
- Immediately beyond the second set of doors are security barriers with a width of 112cm. These can be seen in photograph 3.

# Reception (Warburg Building Reception)

## Photos



1



2

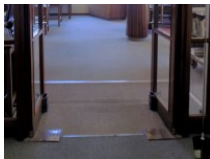
- 
- Warburg Building Reception is located in front of you on entrance.
  - The desk is 4m (4yd 1ft) from the main entrance / accessible entrance.
  - The reception area is clearly visible from the entrance.
  - There is step free access to this reception area.
  - The lighting levels in the reception area are bright.

- The reception desk/counter is medium height (77cm - 109cm).
- There is not a low section of the counter (76cm or below) available.
- The desk is staffed.
- There is a hearing assistance system.
- The type of system is a portable loop.
- The hearing assistance system is signed.
- Staff are trained to use the hearing system.

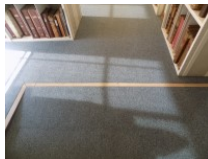
## Getting Around



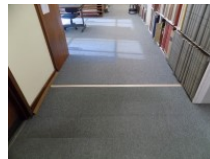
### Photos



1



2



3



4



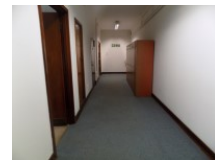
5



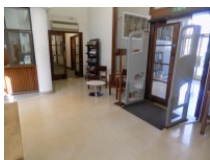
6



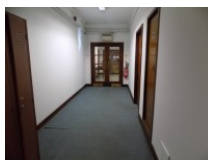
7



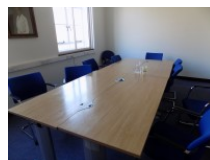
8



9



10



11



12

### Access

#### View

- There is step free access throughout the building via lift(s).

- There is a slight ramp, with no handrails, for access to the library reading room.
- The ramp can be seen in photograph 1. There are similar slopes to access the library on all other floors. An example of which can be seen in photographs 2 and 3. There are also similar slopes to access the library from the library lift on all other floors. An example of which can be seen in photograph 4.
- There is a slight ramp, with no handrails, for access to the Lecture Room.
- The slope can be seen in photograph 5. There is also a set of three medium steps to access a raised area within the room which can be seen in photograph 6.
- There are not doors in corridors which have to be opened manually.

## Getting Around

### View

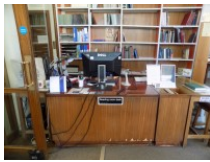
- There is clear signage for building facilities/areas in the foyer/reception area.
- There is clearly written directional signage at key points of circulation routes.
- There is some flooring in corridors which is shiny and could cause issues with glare or look slippery to some people.
- There is good colour contrast between the walls and floor in all areas.
- The lighting levels are good.
- This building does not play background music.
- There is a hearing assistance system.
- The system is a portable loop.

- There is a portable loop available at the Library Reading Room Reception on the ground floor.

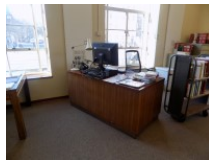
## Reception (Library Reading Room)



### Photos



1



2

- 
- Library Reading Room Reception is located to your left on entering the library reading room which is located to the rear right of the building.
  - The desk is 30m (32yd 2ft) from the entrance.
  - Clear signage for the reception area is not visible from the entrance.
  - There is ramped access to this reception area.
  - The lighting levels in the reception area are bright.
  - The reception desk/counter is low (76cm or lower).
  - There is not a clear knee recess beneath the low/lowered counter.
  - The desk is staffed.
  - There is a hearing assistance system.
  - The type of system is a portable loop.
  - The hearing assistance system is not signed.

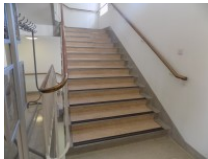
## Comments

View

- There is an additional desk located nearby.

## Other Floors

### Photos



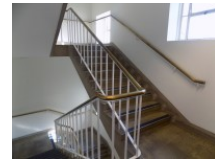
1



2



3



4

---

## Steps

View

- The floors which are accessible by stairs are B, G, 1, 2, 3 and 4.
- The stairs are located in front of you on entrance.
- The stairs are approximately 6m from the main entrance.
- There are 15+ steps between floors.
- There are manual, heavy, double doors to access the stairwell on the basement floor and from the first floor upwards.
- The lighting levels are bright.
- The steps are clearly marked.
- The steps are deep (18cm+).
- The steps do have handrails.
- The steps have a handrail on both sides.
- There is a landing.

- There is a similar set of stairs located in the library area which can be seen in photograph 4.

## Lift (Main)



### Photos



1



2

- 
- There is a lift for public use.
  - The lift is located in front of you on entrance.
  - The lift is a standard lift.
  - The floors which are accessible by this lift are B, G, 1, 2, 3 and 4.
  - Wall mounted information boards are not provided at lift landings.
  - There are manual, heavy, double doors to access the lift lobby on the basement floor and from the first floor upwards.
  - The weight limit for the lift is 1000kg.
  - The lift is approximately 6m (6yd 1ft) from the main entrance.
  - Staff do not need to be notified for use of the lift.
  - The clear door width is 105cm (3ft 5in).
  - The dimensions of the lift are 180cm x 100cm (5ft 11in x 3ft 3in).
  - There are not separate entry and exit doors in the lift.
  - There is a mirror to aid reversing out of the lift.

- The lift does have a visual floor indicator.
- The lift does have an audible announcer.
- The lift does have a hearing loop system.
- The lift does not have Braille markings.
- The lift does have tactile markings.
- The controls for the lift are within 90cm - 120cm from the floor.
- The lighting level in the lift is bright.

## Lift (Library)



### Photos



1

- 
- There is a lift for public use.
  - The lift is located to the right of the building.
  - The lift is a standard lift.
  - The floors which are accessible by this lift are B, G, 1, 2, 3 and 4.
  - Wall mounted information boards are not provided at lift landings.
  - The lift is approximately 25m (27yd 1ft) from the main entrance.
  - Staff do not need to be notified for use of the lift.
  - The clear door width is 105cm (3ft 5in).
  - There are not separate entry and exit doors in the lift.
  - There is a mirror to aid reversing out of the lift.

- The lighting level in the lift is bright.

## Comments

[View](#)

- This lift was out of order at time of survey. (February 2019).

## Library (Warburg Library)

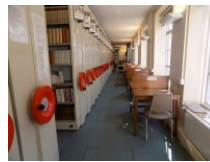
### Photos



1



2



3



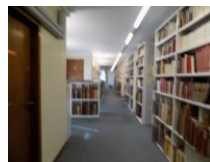
4



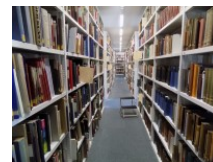
5



6



7



8



9



10

- 
- This library does not have a regular supply of books in Braille.
  - This library does not have a regular supply of books in large print.
  - This library does not have a regular supply of books in audio format.
  - There is an ordering service.



- The library does not have computers with accessible software.
- Auxiliary aids are available for computer users.
- A height adjustable table and height adjustable chair is / are available.

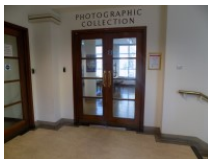
## Comments

[View](#)

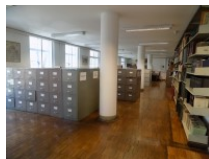
- There are touchscreens in the library at a height of 112cm. These can be seen in photograph 6.
- The higher shelves may prove difficult to reach. Steps are provided for this reason. As can be seen in photograph 8.
- The width between shelves is reduced at times to only 1m. There are often obstacles like steps between shelves.
- The height adjustable table can be seen in photograph 10.

## Library (Iconography Library)

### Photos



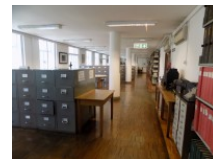
1



2



3



4



5

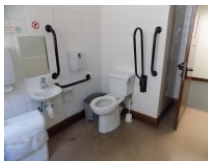
- 
- This library does not have a regular supply of books in Braille.

- This library does not have a regular supply of books in large print.
- This library does not have a regular supply of books in audio format.
- There is not an ordering service.
- The library does not have computers with accessible software.
- Auxiliary aids are available for computer users.
- A height adjustable chair is / are available.

## Accessible Toilet (Lower Ground)



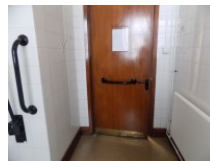
### Photos



1



2



3



4

- 
- Accessible toilet facilities are available.

### Location and Access

#### View

- The toilet is not for the sole use of disabled people.
- There is pictorial signage on or near the toilet door.
- This accessible toilet is approximately 10m (10yd 2ft) from the lift.
- This accessible toilet is located to your left on exiting the lift on the basement floor.
- There is level access to this accessible toilet.
- This is by lift.

## Features and Dimensions

View

- This is a shared toilet.
- A key is not required for the accessible toilet.
- The door opens inwards.
- The door is locked by a twist lock.
- The width of the accessible toilet door is 84cm (2ft 9in).
- The door is light.
- The dimensions of the accessible toilet are 260cm x 256cm (8ft 6in x 8ft 5in).
- There is a clear 150cm x 150cm manoeuvring space in the accessible toilet.
- There is a lateral transfer space.
- As you face the toilet pan the transfer space is on the right.
- The lateral transfer space is 176cm (5ft 9in).
- There is a dropdown rail on the transfer side.
- There is a flush on the transfer side.
- The tap type is lever.
- There is a mixer tap.
- There is not an emergency pull cord alarm in the cubicle.
- Disposal facilities are available in the cubicle.
- There is a/are female sanitary and open waste paper bin disposal units.
- There is a/are coat hook(s).
- There are coat hooks in the toilet at 138cm and 148cm from the floor.

## Position of Fixtures

### View

- Wall mounted grab rails are available for the toilet.
- As you face the toilet the wall-mounted grab rails are on both sides.
- There is a shelf within the accessible toilet.
- The shelf is not higher than 95cm (3ft 1in).
- There is a mirror.
- Mirrors are not placed at a lower level or at an angle for ease of use.
- There is not a hand dryer.
- There is a towel dispenser.
- The towel dispenser cannot be reached from seated on the toilet.
- The towel dispenser is not placed higher than 100cm (3ft 3in).
- There is a toilet roll holder.
- The toilet roll holder can be reached from seated on the toilet.
- The toilet roll holder is not placed higher than 100cm (3ft 3in).
- There is a wash basin.
- The wash basin can be reached from seated on the toilet.
- The wash basin is not placed higher than 74cm (2ft 5in).
- There is a soap dispenser.
- The soap dispenser cannot be reached from seated on the toilet.
- The height of the soap dispenser is 111cm.

## Colour Contrast and Lighting

[View](#)

- The contrast between the internal door and wall is good.
- The contrast between the external door and wall is good.
- The contrast between the wall-mounted grab rail(s) and wall is good.
- The contrast between the dropdown rail(s) and wall is good.
- The toilet seat colour contrast is poor.
- The contrast between the walls and floor is good.
- The lighting levels are bright.

## Comments

[View](#)

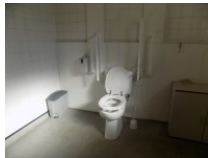
- There is a baby change at a height of 93cm.

## Accessible Toilet (3.04)

### Photos



1



2



3



4

- 
- Accessible toilet facilities are available.

## Location and Access

[View](#)

- The toilet is not for the sole use of disabled people.
- There is Braille, tactile and pictorial signage on or near the toilet door.
- This accessible toilet is approximately 15m (16yd 1ft) from the main lift.
- This accessible toilet is located just in front of the library entrance on the third floor.
- There is level access to this accessible toilet.

## Features and Dimensions

View

- This is a shared toilet.
- A key is not required for the accessible toilet.
- The door opens inwards.
- The door is locked by a twist lock.
- The width of the accessible toilet door is 86cm (2ft 10in).
- The door is light.
- The dimensions of the accessible toilet are 290cm x 286cm (9ft 6in x 9ft 5in).
- There is a clear 150cm x 150cm manoeuvring space in the accessible toilet.
- There is a lateral transfer space.
- As you face the toilet pan the transfer space is on both sides.
- The lateral transfer space on the left is 110cm.
- The lateral transfer space on the right is 60cm.
- There is a dropdown rail on the transfer side.

- There is a flush on the transfer side.
- The tap type is lever.
- There is a mixer tap.
- There is an emergency pull cord alarm in the cubicle.
- The emergency pull cord alarm is fully functional.
- Disposal facilities are available in the cubicle.
- There is a/are female sanitary and open waste paper bin disposal units.
- There is not a/are not coat hook(s).

## **Position of Fixtures**

**View**

- Wall mounted grab rails are available for the toilet.
- As you face the toilet the wall-mounted grab rails are on both sides.
- There is not a shelf within the accessible toilet.
- There is a mirror.
- Mirrors are not placed at a lower level or at an angle for ease of use.
- The height of the toilet seat above floor level is 48cm (1ft 7in).
- There is a hand dryer.
- The hand dryer cannot be reached from seated on the toilet.
- The hand dryer is not placed higher than 100cm (3ft 3in).
- There is a towel dispenser.
- The towel dispenser cannot be reached from seated on the toilet.

- The towel dispenser is placed higher than 100cm (3ft 3in).
- The height of the towel dispenser is 110cm (3ft 7in).
- There is a toilet roll holder.
- The toilet roll holder can be reached from seated on the toilet.
- The toilet roll holder is not placed higher than 100cm (3ft 3in).
- There is a wash basin.
- The wash basin cannot be reached from seated on the toilet.
- The wash basin is placed higher than 74cm (2ft 5in).
- The height of the wash basin is 85cm (2ft 9in).
- There is a soap dispenser.
- The soap dispenser cannot be reached from seated on the toilet.
- The height of the soap dispenser is 115cm.

## Colour Contrast and Lighting

### View

- The contrast between the internal door and wall is good.
- The contrast between the external door and wall is good.
- The contrast between the wall-mounted grab rail(s) and wall is poor.
- The contrast between the dropdown rail(s) and wall is poor.
- The toilet seat colour contrast is poor.
- The contrast between the walls and floor is good.
- The lighting levels are poor.



# Standard Toilet(s)



## Photos



1



2

---

## Location of Standard Toilet(s)

[View](#)

- There are female standard toilets facilities on the ground floor, the first floor, the second floor, the third floor and the fourth floor.
- There are male standard toilets facilities on the basement floor, the ground floor, the first floor, the second floor and the fourth floor.

## Standard Toilet Surveyed

[View](#)

- A male standard toilet was surveyed.
- The toilet surveyed is located to the right of the building on the ground floor.
- There is step free access to the standard toilet(s) surveyed from the entrance.
- The standard toilet surveyed is approximately 15m from the main entrance.
- There is not a/are not cubicle(s) suitable for ambulant disabled people in the standard toilet(s) surveyed.
- There are horizontal grab rails on both sides of the seat.

- Lighting levels in the standard toilet surveyed are good.