



UNIVERSITY
OF LONDON

2021

Postgraduate programmes in Laws

With academic
direction from:



Queen Mary
University of London



london.ac.uk/llm

World class. Worldwide.

Join the World Class

An aerial photograph of London, showing the River Thames flowing through the city. The Tower Bridge is visible in the lower right corner, and the city skyline extends into the distance under a clear sky.

1 A mark of excellence
Gain a University of London degree in Postgraduate Laws and boost your career development.

2 Learn from the experts
Your programme is led, taught and assessed by senior professors from Queen Mary University of London and UCL, both of which are ranked in the top 10 Law departments in the UK (2020 QS World University Rankings).

3 Worldwide relevance
Gain advanced knowledge of legal issues for careers in law, government, banking and financial services, national and international corporations, regional and international organisations, shipping, the media, human rights and more. Choose from over 30 specialisations or compile your own combination of courses.

4 Access a wealth of resources
You receive comprehensive Study Guides written by subject experts, as well as access to extensive online learning materials for each course: introductory videocasts, online revision forums, e-materials, e-forums, and e-clinics with the Dean.

5 Flexible learning
With up to five years to complete the programme, you can spread the cost of your degree and continue working full time. And with no relocation costs, studying for a University of London degree by distance learning can represent a more affordable option than studying on campus.

An aerial photograph of London, showing the River Thames flowing through the city. In the background, the modern skyline of Canary Wharf is visible with several prominent skyscrapers. The middle ground shows a mix of residential and commercial buildings along the riverbanks, with some green spaces. In the foreground, the Tower Bridge is partially visible on the left side. The overall scene captures the diverse urban landscape of London.

“In a fast changing environment of worldwide access to higher education, a University of London degree continues to offer a guarantee of quality, value and intellectual rigour.”

Professor Wendy Thomson
Vice-Chancellor,
University of London

Your prestigious University of London qualification

About your qualification

When you graduate with a degree from the University of London you will receive two important documents – your Final Diploma (the parchment you receive on graduation) and a Diploma Supplement.

The Final Diploma

- Indicates that you were registered with the University of London and awarded a University of London degree.
- Gives the name of the University of London member institutions that developed the syllabus and provided assessment.
- Features the University of London crest and the Vice-Chancellor's signature.

The Diploma Supplement

- Describes the nature, level and content of the programme you successfully completed.
- Includes the transcript of courses taken, marks achieved and overall classification.
- States the role of the University of London member institutions and the method of study.

Contents

Postgraduate programmes in Laws

Join the World Class	2
Your prestigious University of London qualification	4
A welcome from Postgraduate Laws	6
Is this programme for me?	8
Your progression through the awards	9
Flexible study	11
Study support	12
Specialisations	13
Courses	14
Entrance requirements	15
How to apply and register	16
Further information	18

Key dates

To sit exams in May

Best to apply before:
30 September (previous year)
Must register by:
10 November (previous year)

To sit exams in October

Best to apply before:
28 February (same year)
Must register by:
15 April (same year)

A welcome from Postgraduate Laws



Professor Helen Xanthaki

Dean
Postgraduate Laws programme

'We are delighted to welcome you to the University of London's Postgraduate Laws programme. Our qualifications are highly desirable and serve as proof of academic excellence. When you join the programme, you become part of an international community of high academic achievers.

Many of you will be seeking to advance your career in law, but some of you will be seeking to develop your career in other professional arenas, such as government, the civil service or the private sector. Our programmes are accessible to law graduates, non-law graduates and anyone with professional experience.

Our programmes are also flexible and can be adapted to the circumstances of each student – from the law graduate wishing to complete the LLM within one year to the non-qualified professional starting on the Postgraduate Certificate and progressing to the LLM in up to five years.

We offer a choice of over 65 courses. You can pursue an LLM degree without specific specialisation or in any one of the 32 specialisations. If you enter the programme through the Postgraduate Certificate and progress to the LLM, you can emerge with three specialist awards.

I am proud to be directing a unique programme that offers the opportunity to study law at postgraduate level to anyone who is willing and able to put in the hard work required. My team and I are all here to make sure that success can come your way.'



UCL

Joanne Tapper

Programme Officer
Postgraduate Laws programme

'I am delighted to have joined the Postgraduate Laws team and to work on a programme with an outstanding international reputation.

I understand both the challenges and the opportunities of distance learning, and look forward to supporting our international community of students whilst they learn flexibly and work hard towards their awards. I am dedicated to facilitating a positive student experience and to being a supportive contact throughout your studies.'



Queen Mary University of London

“The Department of Law at Queen Mary University of London and the Faculty of Laws at UCL welcome you to our joint online Postgraduate Laws programme awarded by the University of London. Together we offer you academic excellence in 68 fields of law, packaged in a flexible and financially competitive programme. We extend our open access invitation to you: come and join the world class, benefit from an exceptional programme taught by world experts, and entice employers with your achievements.”



Professor Piet Eeckhout
Dean of Laws, UCL



Professor Penny Green
Head of Laws, Queen Mary
University of London



Is this programme for me?



Career advancement for law graduates

Law students and professionals study our programme to gain expertise in a specialised field of law, such as commercial law, banking law, arbitration, common law or shipping law. Law firms tend to prefer job candidates with an LLM from a good university because it indicates that they have acquired advanced, specialist legal training and are qualified to work in a multinational legal environment.

Career advancement for non-law graduates

Non-law graduates or experienced professionals pursue an LLM to gain expertise in areas of the law that regulate their current or prospective careers. Our programme offers 32 specialisations, allowing you to demonstrate a broad awareness of law or specialist knowledge of a specific field – for example: public law for government; international law for international or regional organisations; human rights for NGOs; or maritime law for shipping. The choice of courses is extensive and their application to the career market one of the widest available.

Progression routes

Once you have passed the five modules for the Postgraduate Certificate, you will automatically be eligible for progression to the Postgraduate Diploma. Similarly, once you have passed the 10 modules for the Postgraduate Diploma, you will automatically be eligible for progression to the LLM. To see how this works in practice, please see 'Your progression through the awards' on page 9.

The qualities you need

Our programme is for everyone who has the desire and motivation to study hard and succeed. The programme requires you to be highly motivated and disciplined. You need to be able to master complex problems independently. Some students find such self-directed study challenging, but all agree that it is incredibly rewarding. Watch our students and graduates describe their study experiences and how the degree has helped them in their careers.

Student overview:
bit.ly/llmstudent-intro

Programme overview:
bit.ly/llm-intro

Your progression through the awards

Structure

You take the following number of courses and modules:

Postgraduate Certificate in Laws
Five modules from up to four courses
Postgraduate Diploma in Laws
10 modules from up to four courses
Master of Laws (LLM)
16 modules to complete four courses

Progression rules

If you begin with the Postgraduate Certificate, you can still progress to the LLM by completing the requirements for each award and working upwards. You simply complete the additional modules necessary to achieve the next award, as shown in the adjacent chart.

Please note: you must finish each award for which you are registered before moving on to the next.

Intermediate awards

The university offers three nested awards: PGCert, PGDip and LLM. You decide which level you enrol at (subject to entrance requirements) and where to exit. Start with PGCert, collect it, then move on to PGDip, collect that too; then on to the LLM! Or pause where you want.

An example of how you could progress:

Postgraduate Certificate in Laws to Postgraduate Diploma in Laws to Master of Laws (LLM)

Postgraduate Certificate in Laws: Five modules in total	Module	Course 1	Course 2	Course 3	Course 4
	A				
	B				
	C				
	D				
Postgraduate Diploma in Laws: 10 modules in total	Module	Course 1	Course 2	Course 3	Course 4
	A				
	B				
	C				
	D				
Master of Laws (LLM): 16 modules in total	Module	Course 1	Course 2	Course 3	Course 4
	A				
	B				
	C				
	D				

“The best part of my experience was what I studied. For instance, I did financial services laws and studied financial crime which was useful in my work as a financial compliance officer. I found it really rewarding that I could apply what I was learning in my work.

I made friends all over the world, but organising times to study together was tough. This was a challenge, but it was probably also what gave me the most support.”

Ixora-Rose Wong-Williams
British Virgin Islands



Flexible study

The postgraduate programmes in Laws are flexible: you are not required to attend online revision sessions (although it is strongly advised that you do), complete assignments or come to London. You can sit your exams wherever you are based and whenever you are ready.

Flexible admissions

You can apply to join at any time of year and start whenever you receive your study materials.

Do I need a degree?

You do not need a law degree to apply: students with a good non-law degree can start on the Postgraduate Diploma and progress to the LLM. Students without an honours degree or without a degree can start on the Postgraduate Certificate. For entrance requirements please see page 15.

Flexible study period

You have between one and five years to complete the LLM and the Postgraduate Diploma; and from six months to five years for the Postgraduate Certificate.

Flexible assessment

Exams are held twice a year in over 190 countries. Each module is assessed by a 45-minute unseen written exam with a choice of questions. You can choose when to be examined on any module, so long as you complete your study within the period of registration.

The format and mode of assessment for this programme may change due to events or circumstances beyond our control. Students will be informed of their assessment arrangements via their Virtual Learning Environment (VLE), once confirmed. For the latest information on examinations, please visit: london.ac.uk/exams

Flexible payment

You do not have to pay in full when you start your first course, unless you wish to. Most students choose the pay-as-you-go option, spreading the cost by paying for each new module in turn.

How many times can I repeat exams?

If you are required to resit a module, you will have one further attempt to pass. If you don't feel ready to sit an exam, you can withdraw by notifying us in advance and you

will not lose an attempt. As long as you have not made a first attempt at an exam for a module, you are still able to replace it with another.

How much study time will I need?

It is up to you how you schedule your studies, depending on your work and personal commitments. However, we recommend that you dedicate around 120 hours to each module.

How many modules should I study at one time?

Most students choose to study one course (four modules) every six months. In this way, you can complete the four courses (16 modules) required to complete the LLM within two years.

Is CPD available?

Subject to the regulations of your professional association you may seek CPD points by studying our modules either on the degree or on a stand-alone basis.

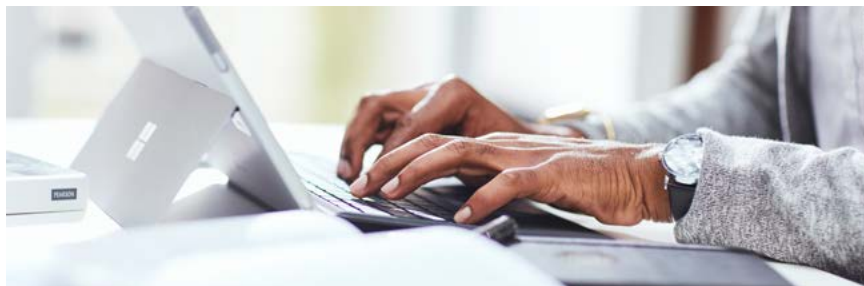
You can take up to four credit-bearing individual modules from the programme on a stand-alone basis. For more information please visit: london.ac.uk/llm

Study support

Study support and materials

This is a programme of independent study. To improve and aid your study experience, extensive study materials are provided, including:

- a comprehensive Skills Guide
- e-textbook(s) and online essential readings for each course
- e-Study Guides written for distance learning purposes, often by the author of the textbook and updated annually
- past examination papers, sample scripts and Examiners' commentaries, all available on our Virtual Learning Environment (VLE)
- Postgraduate Laws Programme handbook containing information and advice that is specific to your studies
- Regulations containing full details of syllabuses, programme structures and assessment
- monthly vlogs, Ask Me Anything forum, and one-to-one online appointments with Professor Helen Xanthaki, the Dean
- Student Café where students can discuss issues and learn from peers.



The Virtual Learning Environment (VLE)

The VLE is integral to your study experience, providing:

- online introductory videos from the lead academic on each course; plus an online revision forum with the academic tutor of each course; plus reading materials
- extensive Online Library resources: onlinelibrary.london.ac.uk/resources
- more than 10 legal databases including LexisNexis® and Westlaw® and other databases of business, management, economics and scholarly materials
- an induction module which covers the regulations, methods of study and examination skills.

Summer course

Prospective and registered students may attend our two-day summer course at UCL or Queen Mary London campuses. You would need to budget for the cost of the course and any travel or accommodation while in London.

The summer course allows students to attend lectures from their Professors at UCL or Queen Mary Law schools, build on exam techniques, meet the Dean and network with other students and academics from the programmes.

Additional educational support

Some students may choose to access additional tuition support at a recognised teaching centre. For further information about recognised centres, including brief profiles and the programmes that they are recognised to teach, please visit:

bit.ly/recognised-centres

Specialisations

You don't have to specialise but if you would like to become a specialist in a particular field of law, you'll need to follow specific courses.

The specialisation will be named on your final certificate for the award; for example, the 'Master of Laws (LLM) in the specialisation: international business law'. If you follow the progression route from Postgraduate Certificate in Laws to Postgraduate Diploma in Laws to the Master of Laws (LLM), each award might be in a different specialisation.

To have a specialisation named on your certificate, you need to complete a certain number of courses or modules within that specialisation: at least three full courses for the Master of Laws (LLM), at least eight modules for the Postgraduate Diploma in Laws and at least four modules for the Postgraduate Certificate in Laws.

Please note: that throughout your study on the programme, you can only select modules from up to four courses. See page 14 for a list of courses.

You can specialise in any of the following areas:

1. Banking and finance law	17. Intellectual property law
2. Commercial and corporate law	18. International business law
3. Common law	19. International criminal justice
4. Comparative and foreign law	20. International dispute resolution
5. Competition law	21. International intellectual property law
6. Computer and communications law	22. International justice
7. Corporate and securities law	23. Law and development
8. Criminology and criminal justice	24. Legal theory and history
9. Economic regulation	25. Maritime law
10. Environmental and natural resources law	26. Media law*
11. Equity and trusts	27. Medicine and the law*
12. European law	28. Procedural law
13. Family law	29. Public international law
14. Financial services law	30. Public law
15. Human rights law	31. Sports law**
16. Insurance law	32. Tax law*

*Only available for PGCert and PGDip.

**Only available for PGCert.

For examples of specialisations please visit: london.ac.uk/llm

Courses

For the full list of syllabuses for each course, please visit the course web pages: london.ac.uk/llm

Admiralty law	Intellectual property and medicine	Law of international finance: syndicated loans
Advanced contract law	Intellectual property and sport	Law of international project finance
Advanced torts	Intellectual property on the internet	Law of international taxation
Applicable laws and procedures in international commercial arbitration	International and comparative bank regulation	Law of treaties
Carriage of goods by sea	International and comparative competition law	Law on investment entities
Commercial banking law: bank–customer relationship	International and comparative law of copyright and related rights	Legislation and statutory interpretation
Commercial trusts law	International and comparative law of patents, trade secrets and related rights	Marine insurance law
Comparative criminal justice policy	International and comparative law of trade marks, designs and unfair competition	Maritime dispute settlement*
Constitutional and institutional law of the European Union	International and comparative trust law	Medical law and ethics
Corporate finance and management issues in company law	International commercial insurance law	Multinational enterprises and the law
Corporate governance and compliance	International criminal law	Private international law in international commercial litigation
Derivatives law	International economic law	Private law aspects of the law of finance
Equity and trusts in context	International environmental law	Regulation and infrastructure of international commercial arbitration
European Convention on Human Rights	International investment law	Russian law and legal institutions
European internal market	International law of the sea	Securities law
European Union competition law	International merger control	Taxation principles and policy
External relations law of the European Union	International natural resources law	Telecommunications law
FinTech: law and regulation	International refugee law	Transfer of technology law
Foundational and constitutional issues in company law	International rights of the child	United Nations protection of human rights
Franchising law	International trade law	Western European legal history
Human rights of women	Jurisprudence and legal theory	World trade law
Industrial and intellectual property	Law and policy of international courts and tribunals	Youth justice
Insurance law (excluding Marine insurance law)	Law of financial crime	

*Cannot be taken in conjunction with *International law of the sea*.

Entrance requirements



Am I eligible?

To register for the LLM degree, Postgraduate Diploma in Laws or Postgraduate Certificate in Laws, you must satisfy our entrance requirements. These can be satisfied through a wide variety of qualifications from around the world. Relevant work experience can also be considered for entry. For further details please visit our LLM web page: london.ac.uk/llm

Progression

Once you have passed the five modules for the Postgraduate Certificate, you will automatically be eligible for progression to the Postgraduate Diploma. Similarly, once you have passed the 10 modules for the Postgraduate Diploma, you will automatically be eligible for progression to the LLM.

Recognition of prior learning (RPL)

If you have obtained credit for postgraduate law modules/courses, you may be considered for RPL. Applicants for the Postgraduate Certificate in Laws may request RPL for no more than one module, applicants for the Postgraduate Diploma for no more than three modules (which must normally be from the same course), and applicants for the LLM for no more than five modules (four of which must normally be from the same course).



Richard Beasley

Argentina

'I have already had a career spanning several decades. Nevertheless, completing the LLM has given me new perspectives for the future. Learning does not finish when the degree is achieved. Use the opportunity of a new job or internship to continue the learning process.'

How to apply and register

“I completed the LLM with no specialisation. I enjoyed it because women and children’s rights is quite educating and I was enlightened about several things I didn’t know. I’m a clergyman and a church administrator at my church, so I chose courses to help me be able to make policies for the church and to solve some legal issues for people in the church.

Anyone coming to the programme will be able to understand the modules because it is written and explained well. It was very interesting and educative to me, I’ve learnt so much in this programme.”

Helen Emmah Isong
Nigeria

Getting started

You must apply online at:
london.ac.uk/llm

Please read the ‘Guidance notes for postgraduate applications’ before you complete your application.

Stage 1

Submit your online application.

Stage 2

Submit your documentary evidence. This can be done online when submitting your application or at a later stage. Please visit:
bit.ly/supply-evidence

Please do not send original documents (scanned copies are acceptable).

Stage 3

We will notify you whether or not you have been accepted.

Please note: applications will only be considered when we have received all the necessary documentation, including the references, where applicable.

Stage 4

Complete the online registration. We explain how to do this in the Offer Letter.

Stage 5

Start your studies. You will be given access to the VLE and your study materials once you have registered.

Useful information for applicants

Submit your application even if it is incomplete (for example, if you are waiting to sit an examination or to receive examination results). Do not delay – we will be able to formally advise if you will meet our entrance requirements once you have completed an outstanding examination.

If you are unsure on whether or not you meet our entrance requirements, we might be able to advise you before you submit your online application. However, due to an increase in our workload we are unable to provide this advice during September and October each year. Please visit: **sid.london.ac.uk**



Ismeria Nana Tsiquayeaba Bruce

Canada

'University of London's distance and flexible learning programme boasts of an environment that is just as distinguished online as it is via traditional means of study and that was an important factor for me.

I wanted to have access to its world class education and be a part of its global network. Knowing that, as a future graduate of this esteemed institution, I'd be able to secure myself a future that would have me representing myself in the best way possible is more than I could have ever hoped for. Honestly, I couldn't be happier with this programme!

Further information

Fees

The total fee payable to the University of London for 2021–2022 will be published on our website once confirmed. On average, fees incur a five per cent year-on-year increase. For the latest information on programme fees, please visit: london.ac.uk/fees

Please note: student fees shown on our website are net of any local VAT, Goods and Services Tax (GST) or any other sales tax payable by the student in their country of residence. Where the University is required to add VAT, GST or any other sales tax at the local statutory rate, this will be added to the fees shown during the payment process. For students resident in the UK, our fees are exempt from VAT.

Financial assistance

Some employers in both the public and private sector may offer financial assistance to their employees. No financial assistance is available from the University.

Bursaries

For newly registered students:

All University of London LLB alumni can receive a 30 per cent bursary for their LLM programme fees.

For all applicants residing in **Pakistan, Bangladesh or Malaysia** a 40 per cent bursary for the LLM is available.

The bursary, which can also be applied to individual LLM modules, can be requested as part of the application process.

Please note: that the bursary only applies to University of London programme fees and will not apply to additional costs such as local examination centre fees, teaching centre fees or any other costs not directly payable to the University. Local examination centre fees may vary by centre. Terms and conditions apply.

Students with disabilities

The University of London welcomes applications from disabled students and/or those who have access requirements.

If you are disabled and/or have access requirements, we will make every reasonable effort to meet your needs. This may include making access arrangements for examinations such as a separate room or special aids. If you would like to tell us about your disability and/or request access arrangements please complete the relevant section of the application form, or contact the Inclusive Practice Manager at: special.arrangements@london.ac.uk

Armed Forces

Students who are members or ex-members of the UK Armed Forces should note that the University of London has been approved by the Ministry of Defence in support of the Enhanced Learning Credits (ELC) scheme (ELC Provider Reference Number 1284). The Scheme provides financial support to eligible Service personnel who wish to enhance their educational or vocational achievements. The ELC Administration Service website can be found at: www.enhancedlearningcredits.com



Connect with us online



**facebook.com/
University.of.London.PGLaws**

Used by current and prospective students, this provides news, developments and details of the Dean's scheduled LLM seminars.



youtube.com/LondonLLM
Videos about the LLM programme and some of the courses available.

The information contained in this prospectus was correct at the date of publication but may be subject to change. The University does not intend by publication or distribution of this prospectus to create any contractual or other legal relation with applicants, registered students, their advisers or any other persons. For the most up-to-date information, please visit our website.

Published by University of London.

**Copyright © University of London,
December 2020.**

For further information on the range of programmes we offer, please visit our website (london.ac.uk) or contact us at:

The Student Advice Centre

University of London
Senate House, Malet Street
London WC1E 7HU
United Kingdom

Telephone enquires: +44 (0)20 7862 8360

Online enquiries: sid.london.ac.uk



View the LLM
web page

This material is available in alternative formats upon request.
Please contact: special.arrangements@london.ac.uk

Follow us on:



london.ac.uk/facebook



london.ac.uk/flickr



london.ac.uk/instagram



london.ac.uk/issuu



london.ac.uk/linkedin



london.ac.uk/twitter



london.ac.uk/youtube

london.ac.uk/llm